

WAAS CH <b>86216</b> <b>W17A</b>	APP CRS <b>175°</b>	Rwy Idg TDZE <b>1433</b> Apt Elev <b>1433</b>
--	------------------------	---

RNAV (GPS) RWY 17  
ALTUS/QUARTZ MOUNTAIN RGNL (A.X.S)

**⚠** For uncompensated Baro-VNAV systems, LNAV/VNAV NA below -17°C (2°F) or above 54°C (130°F). Baro-VNAV and VDP NA when using Hobart Rgnl altimeter setting. DME/DME RNP-0.3 NA. When local altimeter setting not received, use Hobart Rgnl altimeter setting and increase LPV DA to 1754 feet and LNAV/VNAV DA to 1997 feet and increase all MDA 80 feet. Increase LPV, LNAV/VNAV all Cats and Circling Cat C visibility ¼ mile, increase LNAV Cat C visibility ½ mile.

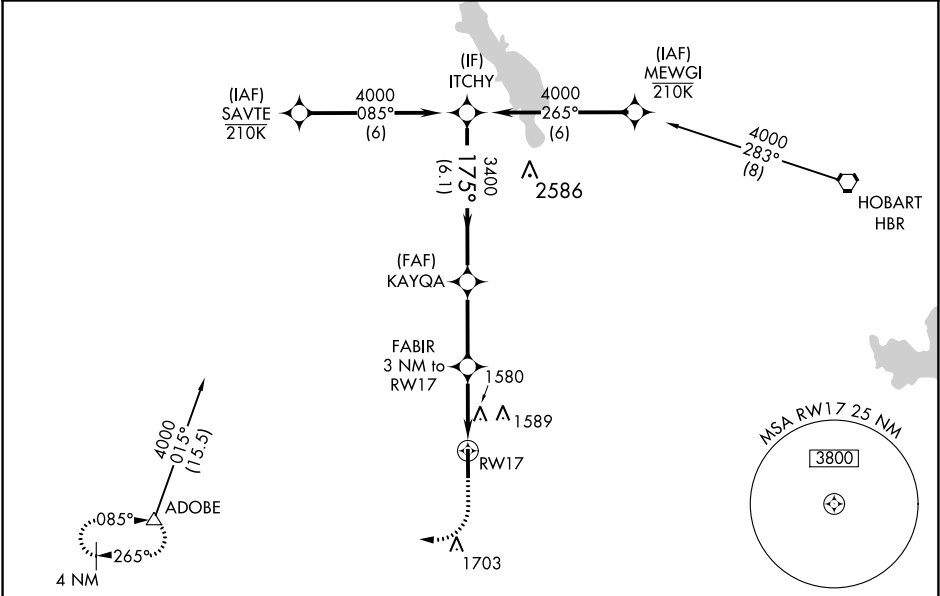
**ODALS**

⋮

⬤

**MISSED APPROACH:**  
Climb to 2000 then climbing right turn to 4000 direct ADOBE and hold.

AWOS-3PT <b>118.825</b>	ALTUS APP CON★ <b>125.1 353.7</b>	UNICOM <b>122.8 (CTAF) 0</b>
----------------------------	--------------------------------------	---------------------------------



ITCHY

4000

175°

KAYQA 3400

FABIR 3 NM to RW17

\*2420

GP 3.00° TCH 40

6.1 NM 3.1 NM 1.7 NM 1.3 NM

2000 4000 ADOBE

↑ ↶ △

\* LNAV only

\*1.3 NM to RW17

RW17

CATEGORY	A	B	C	D
LPV DA	1683-7⁄8	250 (300-7⁄8)		NA
LNAV/VNAV DA	1926-13⁄4	493 (500-13⁄4)		NA
LNAV MDA	1880-1	447 (500-1)	1880-13⁄8 447 (500-13⁄8)	NA
Ⓢ CIRCLING	1920-1	487 (500-1)	2020-11⁄2 587 (600-11⁄2)	NA

ELEV 1433 TDZE 1433

175° to RW17

41

5501 X 75

0.3% UP

35

MIRL Rwy 17-35 0

SC-1, 31 DEC 2020 to 28 JAN 2021

SC-1, 31 DEC 2020 to 28 JAN 2021