

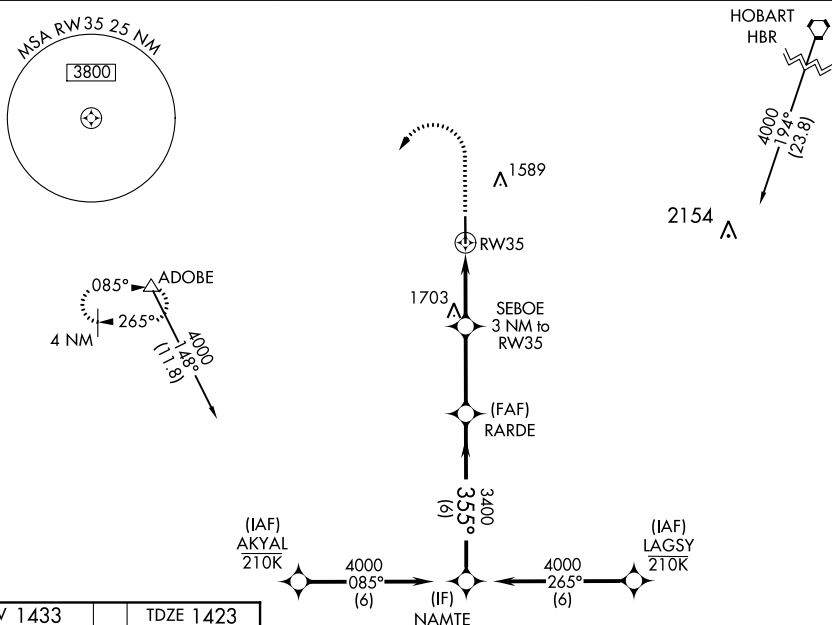
20198

RNAV (GPS) RWY 35
ALTUS/QUARTZ MOUNTAIN RGNL (AXS)

 For uncompensated Baro-VNAV systems, LNAV/VNAV NA below -17°C or above 54°C.

MISSED APPROACH: Climb to 2100 then climbing left turn to 4000 direct ADOBE and hold.

AWOS-3PT 118.825	ALTUS APP CON★ 125.1 353.7	UNICOM 122.8 (CTAF) 0
----------------------------	--------------------------------------	--



VGS and RNAV glidepath not coincident
(VGS Angle 3.00/TCH 40).

*LNAV only.

2100 4000 ADOBE

NAMTE

355°

4000

SEBOE 3 NM to RW35

RARDE 3400

2400*

3400

RW35

*1.6 NM to RW35

GP 3.00° TCH 40

1.6 1.4 3.1 NM 6 NM

34°42'N-99°20'W

ALTUS/QUARTZ MOUNTAIN RGNL (A3S)
RNAV (GPS) RWY 35

SC-1, 31 DEC 2020 to 28 JAN 2021