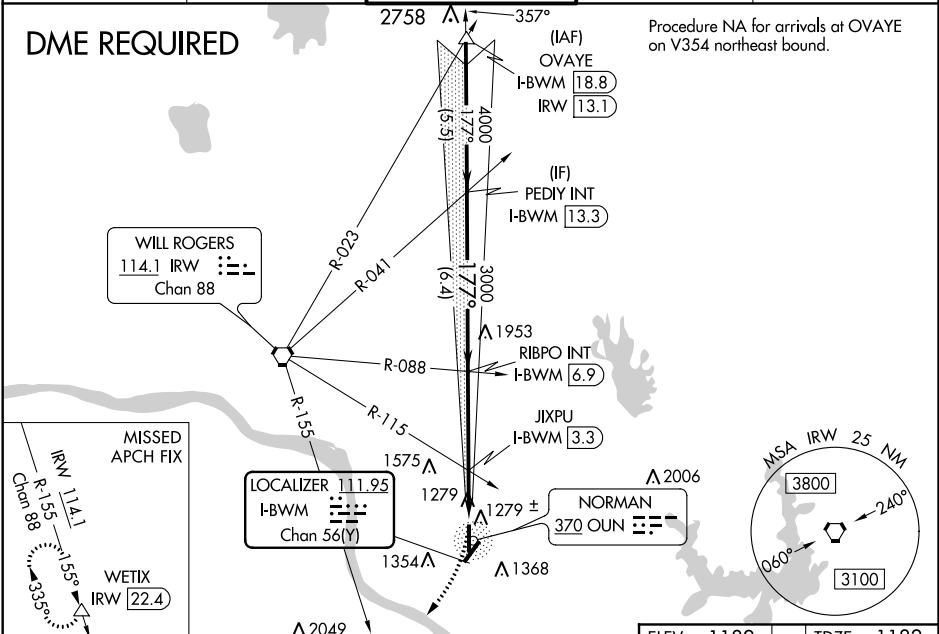


LOC/DME I-BWM 111.95 Chan 56(Y)	APP CRS 177°	Rwy Idg TDZE 1182 Apt Elev 1182
---	------------------------	---

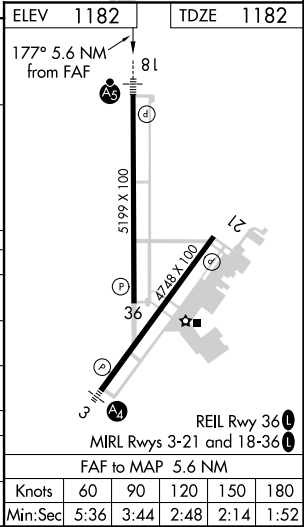
ILS or LOC RWY 18

UNIVERSITY OF OKLAHOMA WESTHEIMER (OUN)

<div><div><div></div><div></div></div><div><div></div><div></div></div></div>	Circling NA southeast of Rwy 3-21. DME Required. VDP NA with Will Rogers altimeter setting. When local altimeter setting not received, use Will Rogers World altimeter setting and increase all DA 41 feet; increase all MDA 60 feet. Increase visibility S-LOC 18 and JXPU Fix Minimums Cats C/D ½ mile, increase Circling Cats C/D ¼ mile.	MALSR <div><div><div></div><div></div></div><div><div></div><div></div></div></div>	MISSED APPROACH: Climbing right turn to 3100 on heading 185° and IRW VORTAC R-155 to WETIX/IRW VORTAC 22.4 DME and hold.	
			AWOS-3 119.55	OKE CITY APP CON 120.45 288.325



VGSi and ILS glidepath not coincident (VGSi Angle 3.00/TCH 55).				
PEDY INT I-BWM 13.3	4000	3000	1575	1279
RIBPO INT I-BWM 6.9				
JXPU INT I-BWM 3.3				
GS 3.00° TCH 51				
	6.4 NM	3.6 NM	1 NM	1 NM
CATEGORY	A	B	C	D
S-ILS 18	1382-½		200 (200-½)	
S-LOC 18	1800-½	618 (700-½)	1800-1¾	618 (700-1¾)
C CIRCLING	1800-1	618 (700-1)	1940-2¼ 758 (800-2¼)	1940-2½ 758 (800-2½)
JXPU FIX MINIMUMS (DUAL VOR RECEIVERS OR DME REQUIRED)				
S-LOC 18	1540-½	358 (400-½)	1540-⅝	358 (400-⅝)
C CIRCLING	1660-1	478 (500-1)	1940-2¼ 758 (800-2¼)	1940-2½ 758 (800-2½)



SC-1, 31 DEC 2020 to 28 JAN 2021

SC-1, 31 DEC 2020 to 28 JAN 2021