

WAAS CH 77531 W03A	APP CRS 033°	Rwy Idg 4748 TDZE 1177 Apt Elev 1182
--	------------------------	---

RNAV (GPS) RWY 3

UNIVERSITY OF OKLAHOMA WESTHEIMER (OUN)

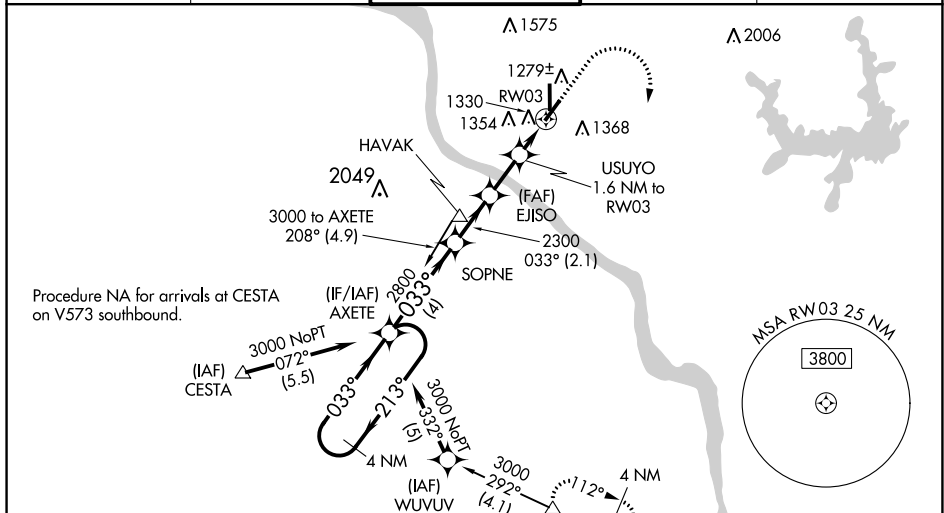
V Baro-VNAV NA when using Will Rogers World altimeter setting. For uncompensated Baro-VNAV systems, LNAV/VNAV NA below -17°C (2°F) or above 54°C (130°F). **A** DME/DME RNP-0.3 NA. When local altimeter setting not received, use Will Rogers World altimeter setting and increase LPV DA to 1501 feet, LNAV/VNAV DA to 1544 feet; increase all MDA 60 feet, increase LPV visibility to ¾ mile all Cats, increase LNAV/VNAV visibility to 1 mile all Cats, and increase LNAV Cat C/D visibility to 1 ½ mile. For inop MAL5, increase LPV all Cats visibility to 1 mile, LNAV/VNAV Cat D visibility to 1 ½ mile, LNAV Cat C/D visibility to 1 ½ mile. For inop MAL5 when using Will Rogers World altimeter setting, increase LPV all Cats visibility to 1 ½ mile, LNAV/VNAV Cat D visibility to 1 ½ mile. LNAV Cat D visibility to 1 ½ mile. Circling NA southeast of Rwy3s 3 and 21.

MALS



MISSED APPROACH:
Climb to 1700 then
climbing right turn to
3100 direct WETIX
and hold.

AWOS-3 119.55	OKE CITY APP CON 120.45 288,325	WESTHEIMER TOWER ★ 118.0 (CTAF) 0	GND CON 121.6	UNICOM 122.95
------------------	------------------------------------	--------------------------------------	------------------	------------------



The diagram illustrates the WETIX VORTAC station's position. It shows a holding pattern at 4 NM from AXETE, a 3000-foot MSL elevation, and a 213° heading. The station is located 1700 feet above the ground, with a 3100-foot ceiling. The station is also shown relative to other airports: SOPNE (2800 feet), EJISO (2300 feet), and USUYO (1.6 NM to RW03). The station is also shown relative to the 1720-foot MSL elevation. The station is also shown relative to the 1720-foot MSL elevation.