

WAAS CH 82729 W36A	APP CRS 357°	Rwy Idg TDZE 1182 Apt Elev 1182	5199 1182 1182
--	------------------------	---	---

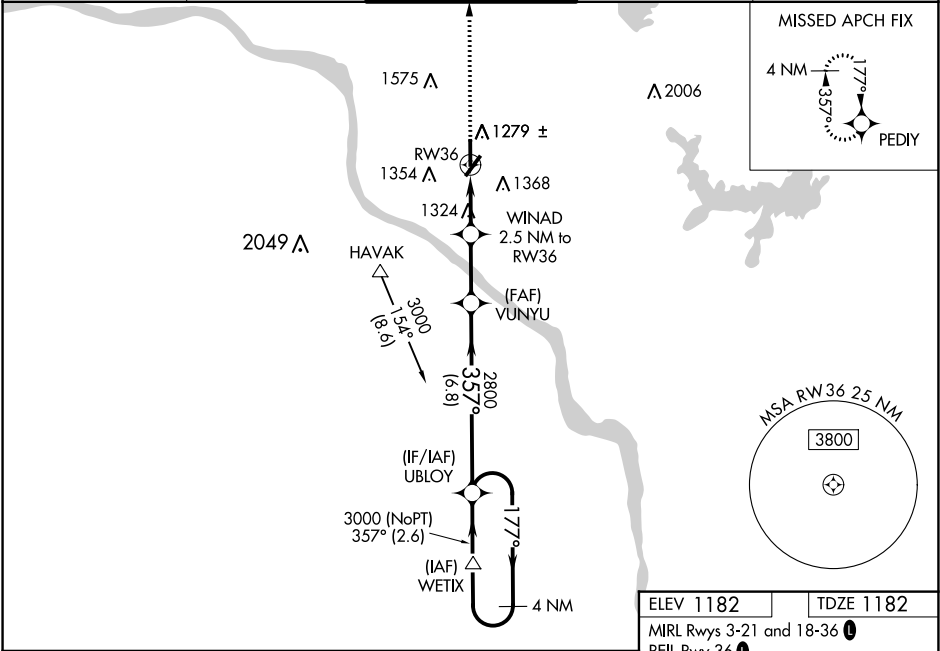
RNAV (GPS) RWY 36

UNIVERSITY OF OKLAHOMA WESTHEIMER (OUN)

▼ For uncompensated Baro-VNAV systems, procedure NA below -17°C (2°F) or above 54°C (130°F). Baro-VNAV and VDP NA when using Will Rogers World altimeter setting. DME/DME RNP-0.3 NA. When local altimeter setting not received, use Will Rogers World altimeter setting and increase LPV DA to 1473 feet, LNAV/VNAV DA to 1541 feet; increase all MDA 60 feet, increase LPV visibility all Cats to 1 mile, LNAV/VNAV visibility all Cats to 1¼ mile, and increase Circling Cat C/D visibility ¼ mile. Circling NA southeast of Rwy 3 and 21.

MISSED APPROACH:
Climb to 4000 direct
PEDIY and hold.

AWOS-3 119.55	OKE CITY APP CON 120.45 288.325	WESTHEIMER TOWER ★ 118.0 (CTAF) 0	GND CON 121.6	UNICOM 122.95
-------------------------	---	---	-------------------------	-------------------------



4 NM Holding Pattern UBLOY		4000 PEDIY	*LNAV only	
3000	←177°	357°→	357°	
GP 3.00° TCH 40		VUNYU 2800	WINAD 2.5 NM to RW36	*1.3 NM to RW36
		*2000		RW36
		6.8 NM	2.5 NM	1.2 NM
				1.3 NM
CATEGORY	A	B	C	D
LPV DA	1432-7/8		250 (300-7/8)	
LNAV/VNAV DA	1500-1 1/8		318 (400-1 1/8)	
LNAV MDA	1640-1	458 (500-1)	1640-1 3/8	458 (500-1 3/8)
CIRCLING	1660-1	478 (500-1)	1940-2 1/4	1940-2 1/2
			758 (800-2 1/4)	758 (800-2 1/2)

