

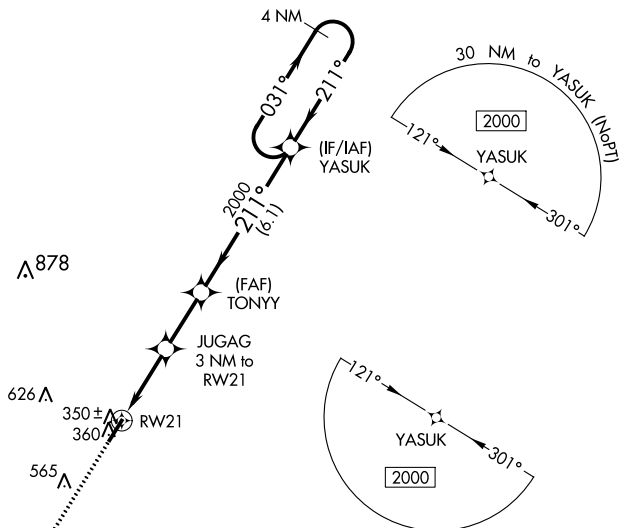
RNAV (GPS) RWY 21

MONTICELLO MUNI/ELLIS FIELD (LLQ)

T For uncompensated Baro-VNAV systems, LNAV/VNAV NA below -7°C (20°F) or
A above 54°C (130°F). Rwy 21 helicopter visibility reduction below $\frac{3}{4}$ SM NA.

MISSED APPROACH: Climb to 2000 direct JOSAS and hold.

MEMPHIS CENTER
135.875 269.35

UNICOM
122.8 (CTAF) **L**

MISSED APCH FIX
IOSAS ▲

[illegible]

CATEGORY	A	B	C	D
LPV DA	514- $\frac{7}{8}$ 259 (300- $\frac{7}{8}$)			
LNAV/VNAV DA	532-1 277 (300-1)			
LNAV MDA	600-1 345 (400-1)			
C CIRCLING	780-1 512 (600-1)		980-2 712 (800-2)	980-2 $\frac{1}{4}$ 712 (800-2 $\frac{1}{4}$)

