

APP CRS	Rwy Idg	5020
031°	TDZE	268
	Apt Elev	268

RNAV (GPS) RWY 3

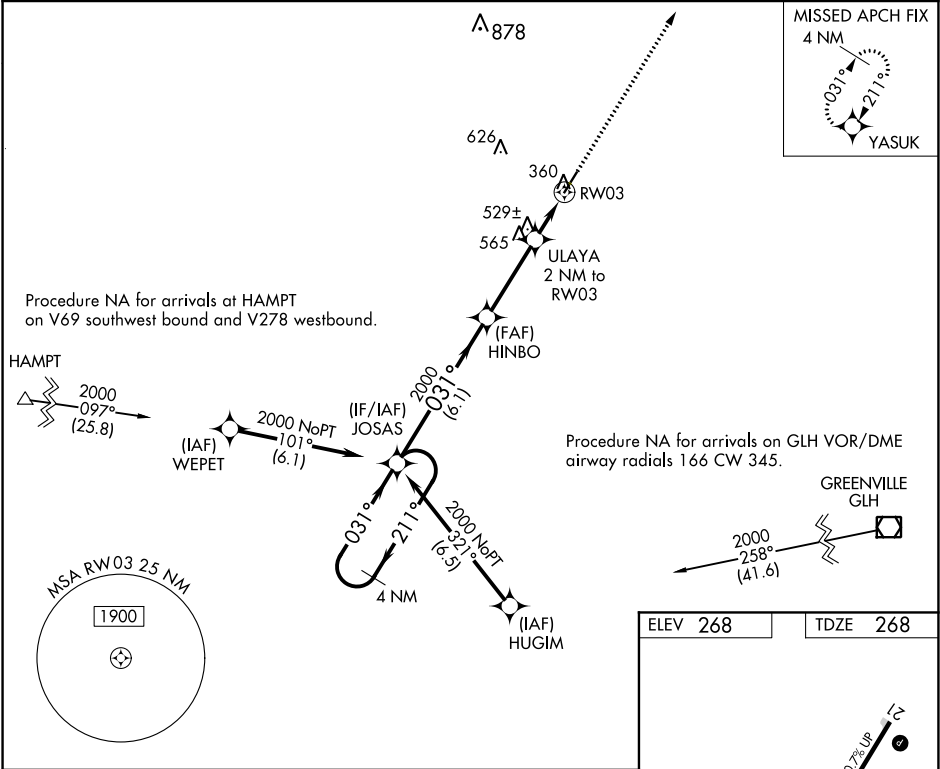
MONTICELLO MUNI/ELLIS FIELD (LLQ)

RNP APCH

When local altimeter setting not received, use Pine Bluff altimeter setting and increase all MDA 100 feet and LNAV Cat C visibility  $\frac{3}{8}$  SM and Circling Cat C  $\frac{1}{2}$  SM.  
Rwy 3 helicopter visibility reduction below  $\frac{3}{8}$  SM NA.

MISSED APPROACH: Climb to 2000 direct YASUK and hold.

ASOS 133.325	MEMPHIS CENTER 135.875 269.35	UNICOM 122.8 (CTAF) 1
-----------------	----------------------------------	--------------------------



4 NM Holding Pattern

JOSAS HINBO

2000 ← 211° 031° → 2000

ULAYA 2 NM to RW03

3.00° TCH 52

6.1 NM 3.3 NM 2 NM

CATEGORY	A	B	C	D
LNAV MDA	820-1	552 (600-1)	820-1 $\frac{1}{8}$ 552 (600-1 $\frac{1}{8}$ )	NA
CIRCLING	820-1	550 (600-1)	980-2 712 (800-2)	NA

2000 YASUK

5020 X 75

0.7% UP

031° to RW03

MIRL Rwy 3-21 1

REIL Rwy 3 and 21 1