

APP CRS
216°

Rwy Idg
5004

TDZE
717

Apt Elev
717

RNAV (GPS) RWY 22

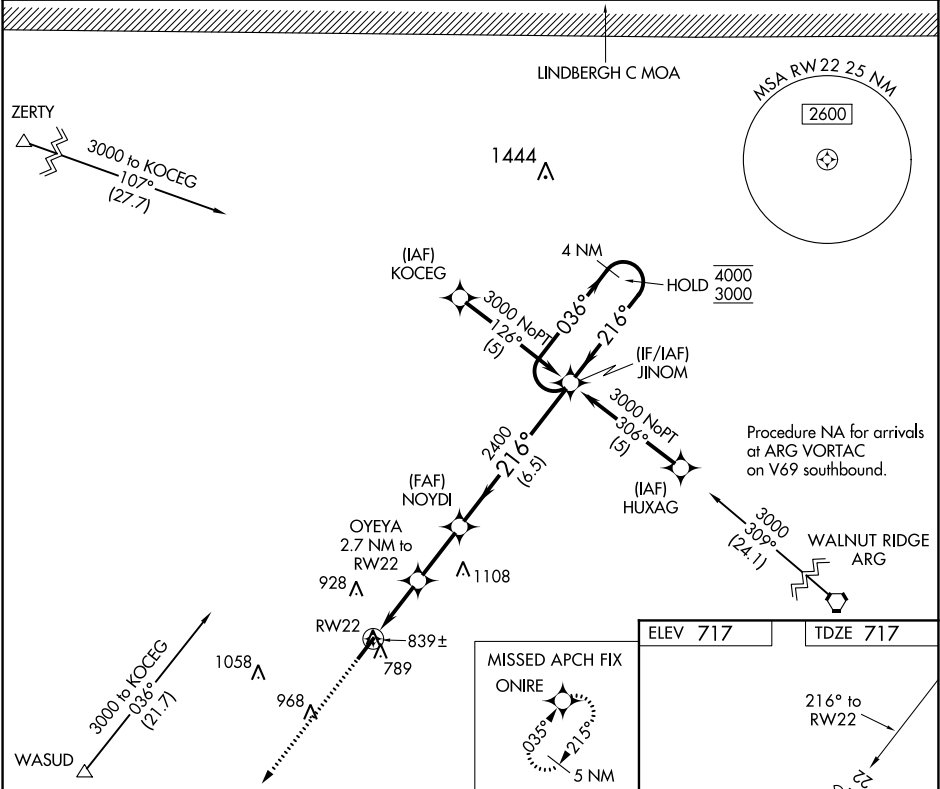
SHARP COUNTY RGNL (CVK)

RNP APCH.

Rwy 22 helicopter visibility reduction below ¾ SM NA. Circling Rwy 4 NA at night. Use Walnut Ridge Rgnl altimeter setting, when not received, use Jonesboro Muni setting and increase all MDAs 60 feet, increase LNAV Cat C visibility ½ SM.

MISSED APPROACH: Climb to 3000 direct ONIRE and hold.

ARG AWOS-3PT 135.925	MEMPHIS CENTER 120.075 289.4	UNICOM 122.7 (CTAF) 0
--------------------------------	--	---------------------------------



3000

ONIRE

VGSI and RNAV glidepath not coincident (VGSI Angle 3.00/TCH40).

OYEYA
2.7 NM to RW22

NOYDI

JINOM

4 NM Holding Pattern

RW22

216°

216°

036°

4000

3000

3.04°

TCH 40

1600

2400

2.7 NM

2.4 NM

6.5 NM

CATEGORY	A	B	C	D
LNAV MDA	1360-1	643 (700-1)	1360-1½ 643 (700-1½)	NA
CIRCLING	1400-1	683 (700-1)	1400-2 683 (700-2)	NA

MIRL Rwy 4-22 0