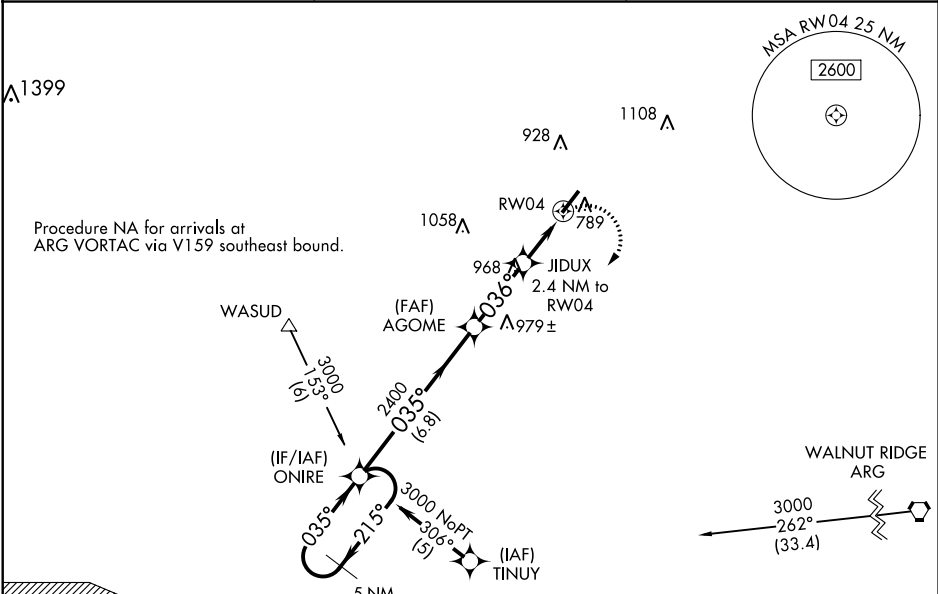


APP CRS	Rwy Idg	5158
036°	TDZE	700
	Apt Elev	716

RNAV (GPS) RWY 4
SHARP COUNTY RGNL (CVK)

RNP APCH.	MISSED APPROACH: Climbing right turn to 3000 direct ONIRE and hold.
<div>▼ Use Walnut Ridge altimeter setting; if not received, use Jonesboro altimeter setting and increase all MDAs 60 feet. Rwy 4 helicopter visibility reduction below 1 SM NA. Straight-in Rwy 4 NA at night, Circling Rwy 4 NA at night.</div> <div>▲ NA</div>	

ARG AWOS-3PT 135,925	MEMPHIS CENTER 120,075 289,4	UNICOM 122.7 (CTAF) 0
-------------------------	---------------------------------	--------------------------



SHIRLEY 1 MOA		ELEV 716		TDZE 700	
5 NM Holding Pattern		Visual Segment - Obstacles.		3000 ONIRE	
3000 ← 215° 035° →		ONIRE		AGOME	
2400		JIDUX 2.4 NM to RW04		RW04	
1460		6.8 NM		2.9 NM	
2.4 NM		CATEGORY		A	
B		C		D	
LNAV MDA		1260-1		560 (600-1)	
CIRCLING		1400-1		684 (700-1)	
MIRL Rwy 4-22 0		036° to RW04		036° to RW04	