

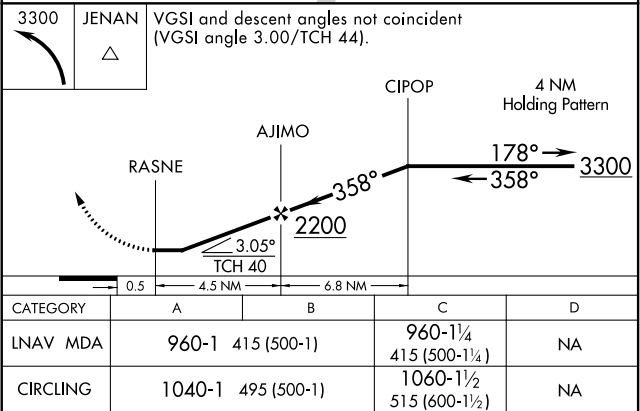
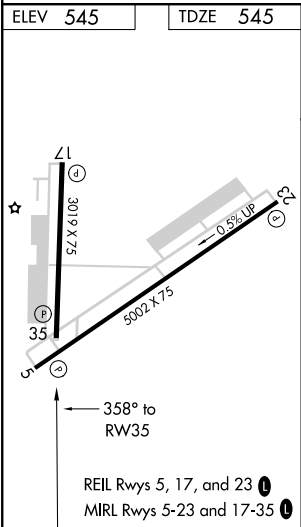
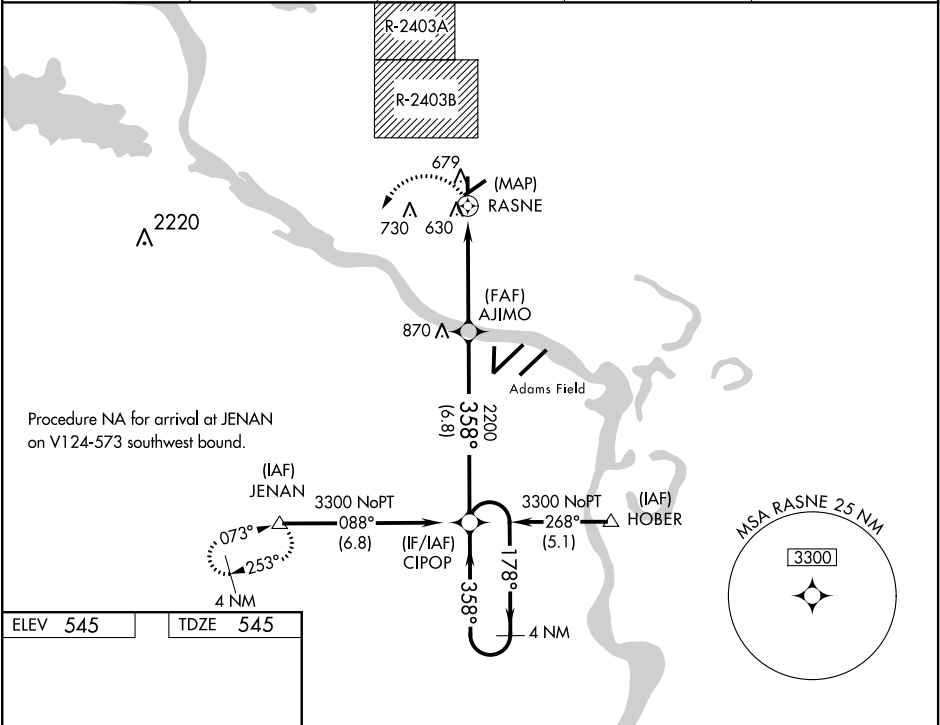
| | | |
|---------|----------|------|
| APP CRS | Rwy Idg | 3019 |
| 358° | TDZE | 545 |
| | Apt Elev | 545 |

RNAV (GPS) RWY 35

NORTH LITTLE ROCK MUNI (ORK)

| | | |
|-----------|--|---|
| RNP APCH. | <p>Procedure NA when restricted area R-2403B is in use. Use Bill and Hillary Clinton National/Adams Field altimeter setting; when not received, use Searcy altimeter setting and increase all MDAs 60 feet and visibility LNAV Cat C ½ SM. Rwy 35 helicopter visibility reduction below ¾ SM LNAV.</p> | MISSED APPROACH: Climbing left turn to 3300 direct JENAN WP and hold. |
|-----------|--|---|

| | | | | |
|---------------------|--------------------|------------------------------------|-------------------|----------------------------|
| AWOS-3PT 123.775 | LIT ASOS 125.65 | LITTLE ROCK APP CON 119.5 306.2 | CLNC DEL 121.6 | UNICOM 123.075 (CTAF) 0 |
|---------------------|--------------------|------------------------------------|-------------------|----------------------------|



SC-1, 31 DEC 2020 to 28 JAN 2021

SC-1, 31 DEC 2020 to 28 JAN 2021