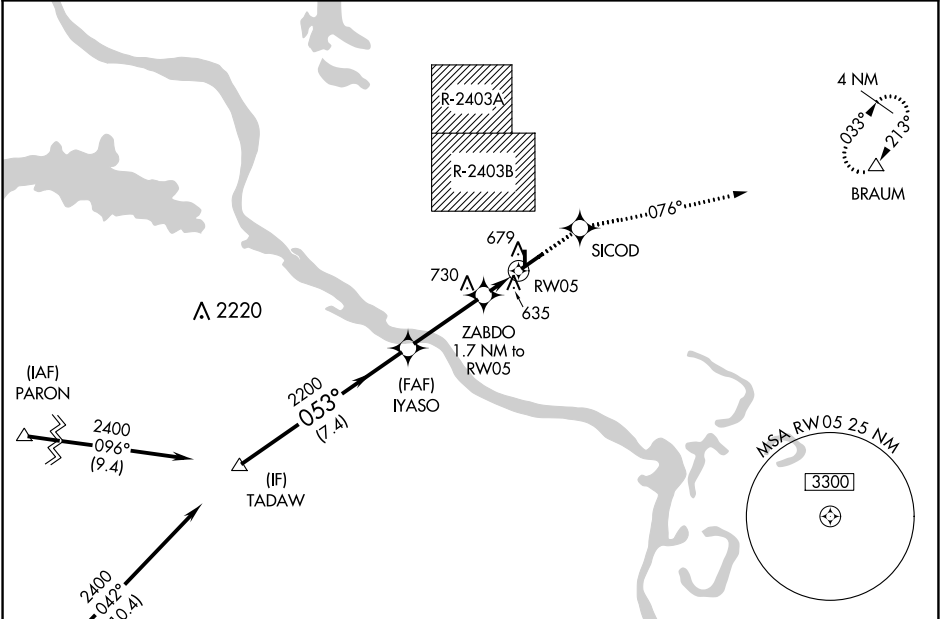


WAAS CH <b>58106</b> <b>W05A</b>	APP CRS <b>053°</b>	Rwy Idg TDZE <b>541</b> Apt Elev <b>545</b>
--	------------------------	---

**RNAV (GPS) RWY 5**  
NORTH LITTLE ROCK MUNI (ORK)

<b>NA</b> DME/DME RNP-0.3 NA. Use Little Rock/Bill and Hillary Clinton National/Adams Field altimeter setting, when not received procedure NA. Circling to Rwy 17 NA at night. Circling NA for Cats B and C north of Rwy 5-23 when restricted area R-2403B in use. Baro-VNAV NA. Visibility reduction by helicopters NA.	MISSED APPROACH: Climb to 2000 direct SICOD and via 076° track to BRAUM and hold.
---	---

AWOS-3PT <b>123.775</b>	LIT ASOS <b>125.65</b>	LITTLE ROCK APP CON <b>119.5 306.2</b>	CLNC DEL <b>121.6</b>	UNICOM <b>123.075 (CTAF)</b>
----------------------------	---------------------------	---	--------------------------	---------------------------------



ELEV 545		TDZE 541	
TADAW		SICOD	
2400		076° tr	
053°		BRAUM	
IYASO		*LNAV only.	
ZABDO		*1.7 NM to RWY 5	
1100*		RWY 5	
GP 3.00°		301 x 75	
TCH 40		5002 x 75	
7.4 NM		053° to RWY 5	
3.3 NM		REIL Rws 5, 17, and 23	
1.7 NM		MIRL Rws 5-23 and 17-35	
CATEGORY	A	B	C
LPV DA	854-1	313 (400-1)	NA
LNAV/VNAV DA	986-1½	445 (500-1½)	NA
LNAV MDA	1000-1	459 (500-1)	1000-1¼ 459 (500-1¼)
CIRCLING	1060-1	515 (600-1)	1060-1½ 515 (600-1½)