

WAAS CH 86224 W19A	APP CRS 191°	Rwy Idg 6008 TDZE 264 Apt Elev 264
--	------------------------	---

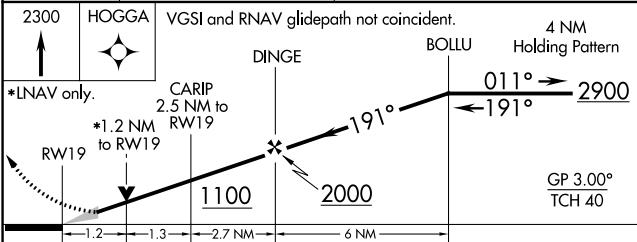
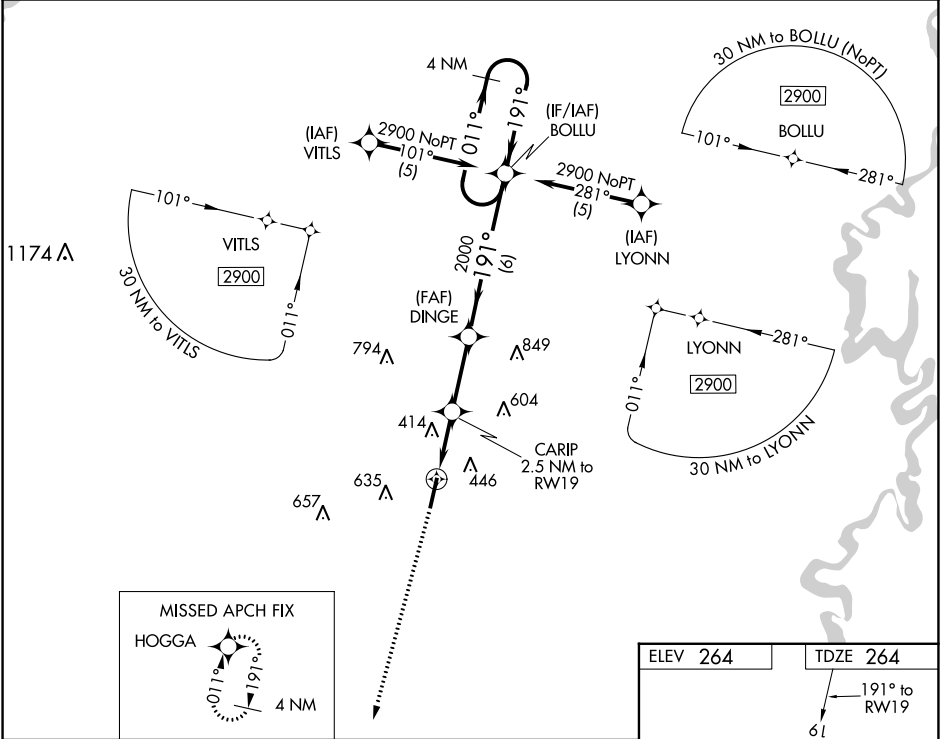
RNAV (GPS) RWY 19

SEARCY MUNI (SRC)

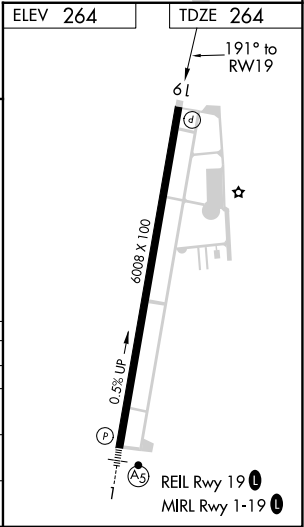
DME/DME RNP-0.3 NA. If local altimeter setting not received, use Little Rock Bill and Hillary Clinton National/Adams Field altimeter setting and increase all DAs/MDAs 100 feet. VDP NA with Little Rock Bill and Hillary Clinton National/Adams Field altimeter setting. Circling NA for Cat C west of Rwy 1-19.

MISSED APPROACH:
Climb to 2300 direct HOGGA and hold.

AWOS-3PT 128.325	LITTLE ROCK APP CON 119.75 291.775	CLNC DEL 119.75	UNICOM 122.7 (CTAF) 0
----------------------------	--	---------------------------	---------------------------------



CATEGORY	A	B	C	D
LPV DA	514-1	250 (300-1)		NA
RNAV/VNAV DA	NA			
RNAV MDA	680-1 416 (500-1)	680-1¼ 416 (500-1¼)		NA
CIRCLING	760-1 496 (500-1)	760-1½ 496 (500-1½)		NA



SC-1, 31 DEC 2020 to 28 JAN 2021

SC-1, 31 DEC 2020 to 28 JAN 2021