

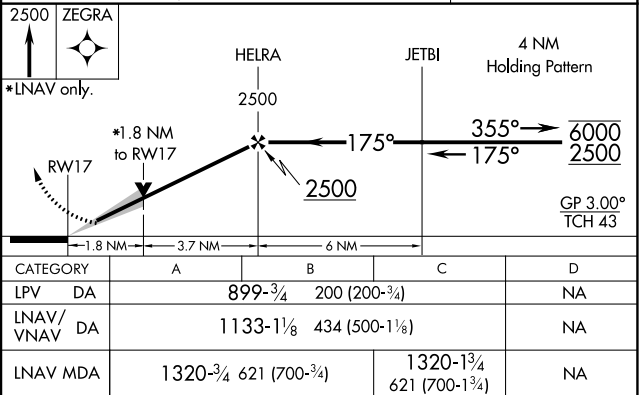
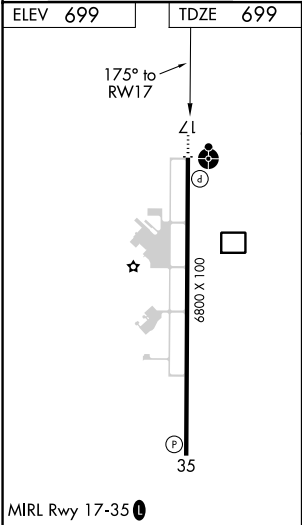
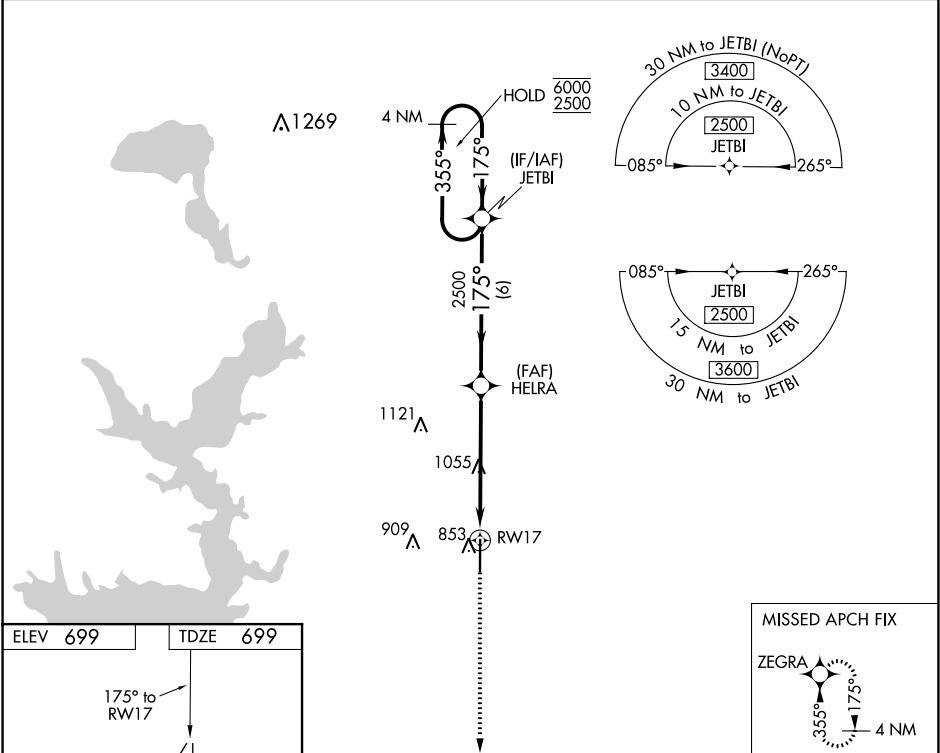


WAAS CH 99518 W17A	APP CRS 175°	Rwy Idg TDZE 699 Apt Elev 699
--	------------------------	---

RNAV (GPS) RWY 17
DURANT RGNL - EAKER FIELD (DUA)

RNP APCH.	ODALS	MISSED APPROACH: Climb to 2500 direct ZEGRA and hold.
 Inop table does not apply to LPV and LNAV Cat C. For uncompensated Baro-VNAV systems, LNAV/VNAV NA below -16°C or above 54°C. For inop ALS, increase LNAV/VNAV Cat A/B visibility to 1 1/4 SM.		

AWOS-3 124.175	FORT WORTH CENTER 124.75 323.0	UNICOM 122.8 (CTAF) 0
--------------------------	--	---------------------------------



SC-1, 31 DEC 2020 to 28 JAN 2021

SC-1, 31 DEC 2020 to 28 JAN 2021