

WAAS
CH **70614**
W17A

APP CRS
172°

Rwy Idg
TDZE **2176**
Apt Elev **2189**

RNAV (GPS) RWY 17
WEST WOODWARD (WWR)

RNP APCH

▼

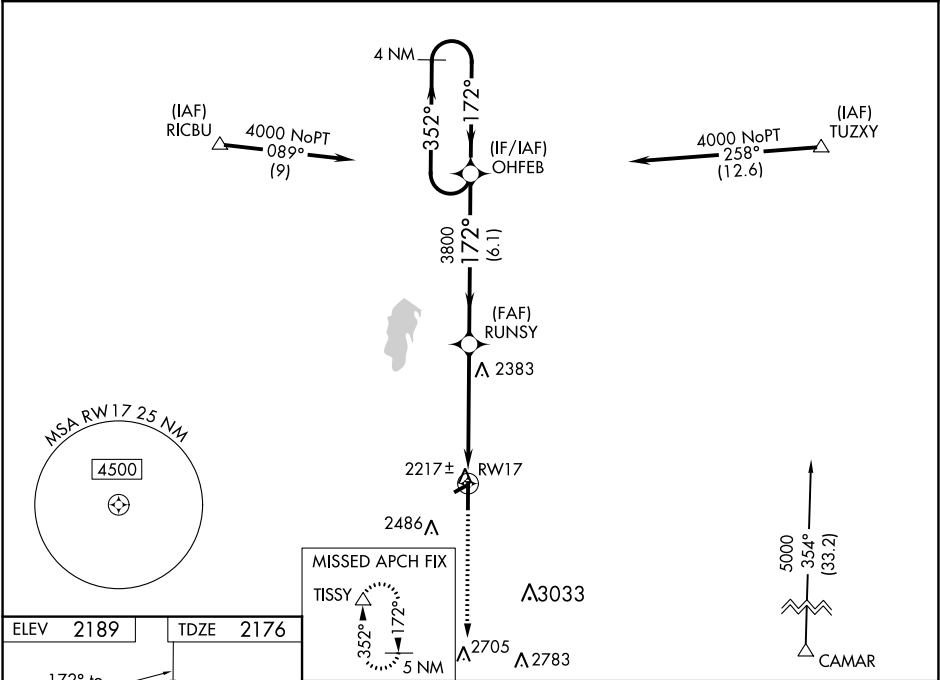
▲

Baro-VNAV and VDP NA when using Gage altimeter setting. For uncompensated Baro-VNAV systems, LNAV/VNAV NA below -19°C or above 54°C. When local altimeter setting not received, use Gage altimeter setting and increase all DA/MDA 40 feet. Inop table does not apply. Circling Rwy 5, 23 NA at night.

ODALS

MISSED APPROACH:
Climb to 4500 direct
TISSEY and hold.

AWOS-3 118.425	KANSAS CITY CENTER 126.95 379.2	UNICOM 122.8 (CTAF) 0
--------------------------	-------------------------------------------	---------------------------------



ELEV 2189

TDZE 2176

172° to RW17

2500 X 60

5502 X 100

2230

35

4500

TISSEY

352°

172°

5 NM

*LNAV only.

*1.6 NM to RW17

RUNSY

3800

172°

352°

4000

4 NM Holding Pattern

OHFEB

GP 3.00°

TCH 39

CATEGORY	A	B	C	D
LPV DA	2426-1	250 (300-1)		
LNAV/VNAV DA	2572-1½	396 (400-1½)		
LNAV MDA	2700-1 524 (600-1)	2700-1½ 524 (600-1½)	2700-1¾ 524 (600-1¾)	2700-2¼ 524 (600-2¼)
CIRCLING	2700-1 511 (600-1)	2860-2 671 (700-2)	2860-2¼ 671 (700-2¼)	