

WAAS CH <b>40314</b> <b>W35A</b>	APP CRS <b>352°</b>	Rwy Idg <b>5502</b> TDZE <b>2189</b> Apt Elev <b>2189</b>
--	------------------------	---

# RNAV (GPS) RWY 35

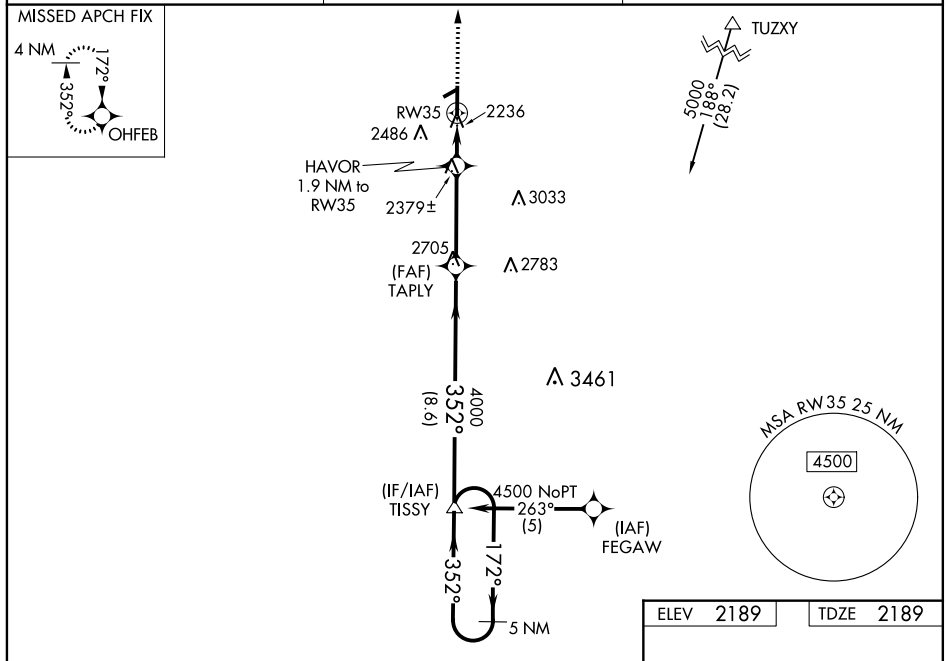
## WEST WOODWARD (WWR)

RNP APCH.

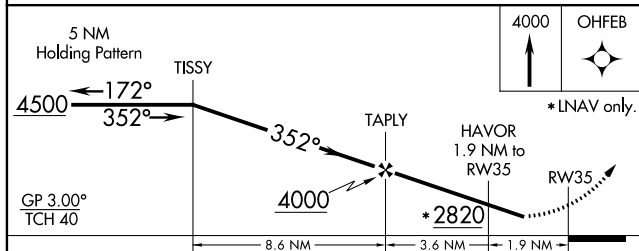
**V** Baro-VNAV NA when using Gage altimeter setting. For uncompensated Baro-VNAV systems, **A** LNAV/VNAV NA below -19°C or above 54°C. When local altimeter setting not received, use Gage altimeter setting and increase all DA/MDA 40 feet and increase LNAV Cat C and D visibility to 1½ SM. Circling Rwy 5, 23 NA at night.

**MISSED APPROACH:**  
Climb to 4000 direct  
OHFEB and hold.

AWOS-3 <b>118.425</b>	KANSAS CITY CENTER <b>126.95 379.2</b>	UNICOM <b>122.8 (CTAF) 0</b>
--------------------------	---	---------------------------------



ELEV	2189		TDZE	2189
------	------	--	------	------



CATEGORY	A	B	C	D
LPV DA	2470-1 281 (300-1)			
LNAV/ VNAV DA	2506-1¼ 317 (400-1¼)			
LNAV MDA	2700-1 511 (600-1)		2700-1½ 511 (600-1½)	
CIRCLING	2700-1 511 (600-1)		2860-2 671 (700-2)	2860-2¼ 671 (700-2¼)

