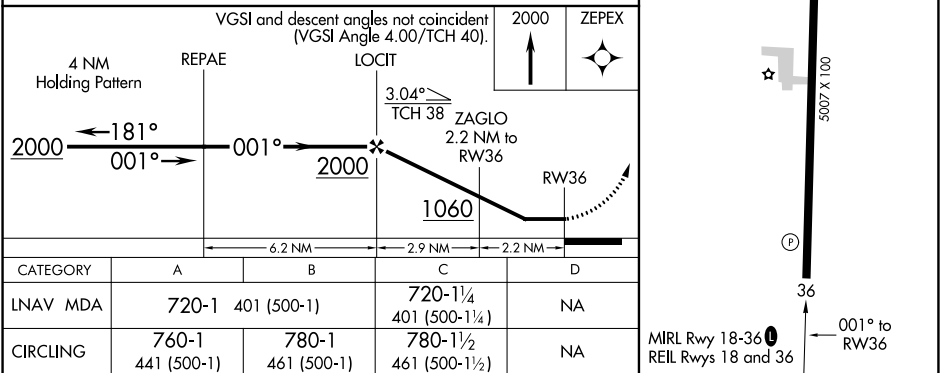
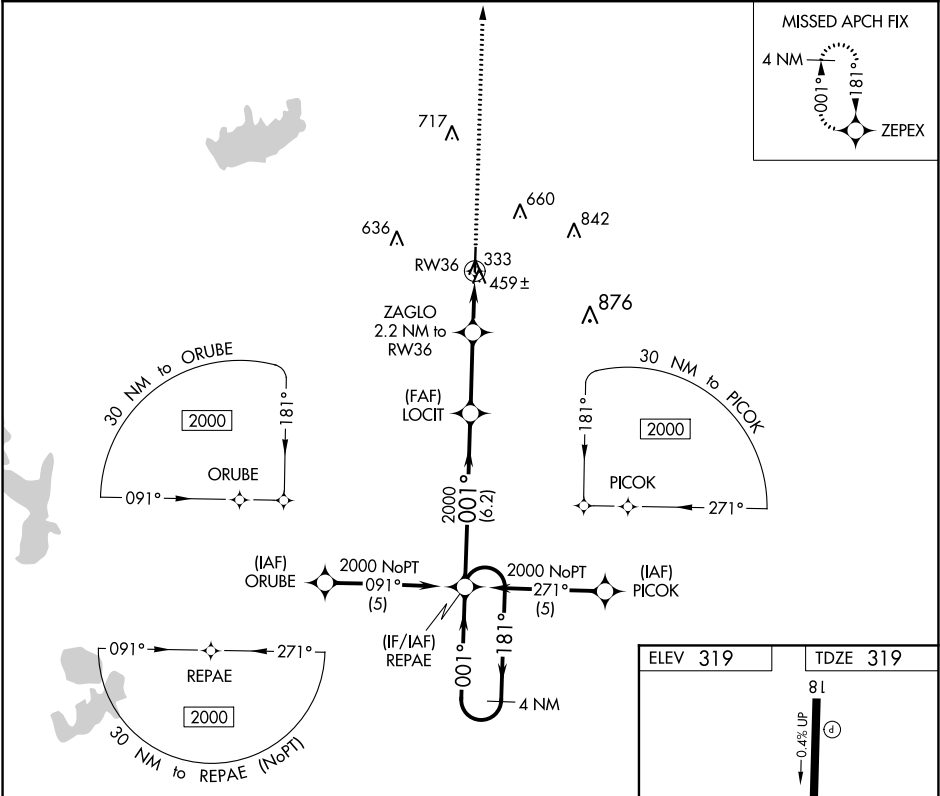


APP CRS	Rwy Idg	5007
001°	TDZE	319
	Apt Elev	319

RNAV (GPS) RWY 36  
RALPH C WEISER FIELD (AGO)

RNP APCH.	MISSED APPROACH: Climb to 2000 direct ZEPEX and hold.
Obtain local altimeter setting on CTAF; when not received use El Dorado altimeter setting and increase all MDA 60 feet. Rwy 36 helicopter visibility reduction below ¾ SM NA.	

AWOS-2 118.05	FORT WORTH CENTER 128.2 269.1	UNICOM 122.8 (CTAF) 0
------------------	----------------------------------	--------------------------



SC-1, 31 DEC 2020 to 28 JAN 2021

SC-1, 31 DEC 2020 to 28 JAN 2021