

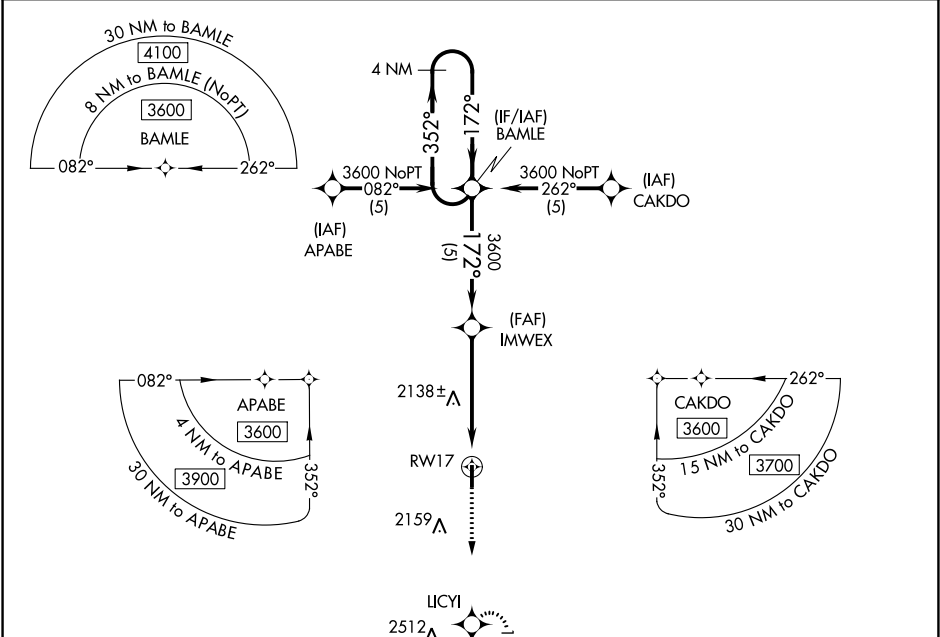
APP CRS <b>172°</b>	Rwy Idg <b>4000</b> TDZE <b>1822</b> Apt Elev <b>1822</b>
------------------------	---

RNAV (GPS) RWY 17

BUFFALO MUNI (BFK)

<div><div>▼</div><div>▲ NA</div></div> <div>DME/DME RNP-0.3 NA. Use Woodward/West Woodward altimeter setting; if not received, procedure not authorized.</div>	MISSED APPROACH: Climb to 3800 direct LICY WP and hold.
--	---

AWOS-3 <b>118.425</b>	KANSAS CITY CENTER <b>126.95 379.2</b>	CTAF <b>122.9 0</b>
--------------------------	---	------------------------



ELEV 1822

TDZE 1822

172° to RW17

4000 X 60

0.7% UP

35

4 NM Holding Pattern

BAMLE

IMWEX

3600

352°

172°

3600

172°

3.28° TCH 40

RW17

5 NM

5 NM

CATEGORY	A	B	C	D
LNAV MDA	2500-1	678 (700-1)	2500-2 678 (700-2)	NA
CIRCLING	2500-1	678 (700-1)	2500-2 678 (700-2)	NA

MIRL Rwy 17-35 0

SC-1, 31 DEC 2020 to 28 JAN 2021

SC-1, 31 DEC 2020 to 28 JAN 2021