

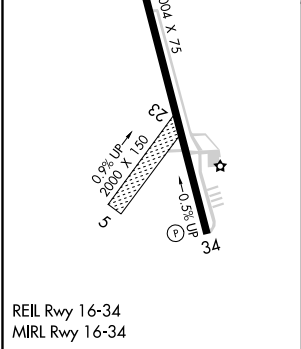
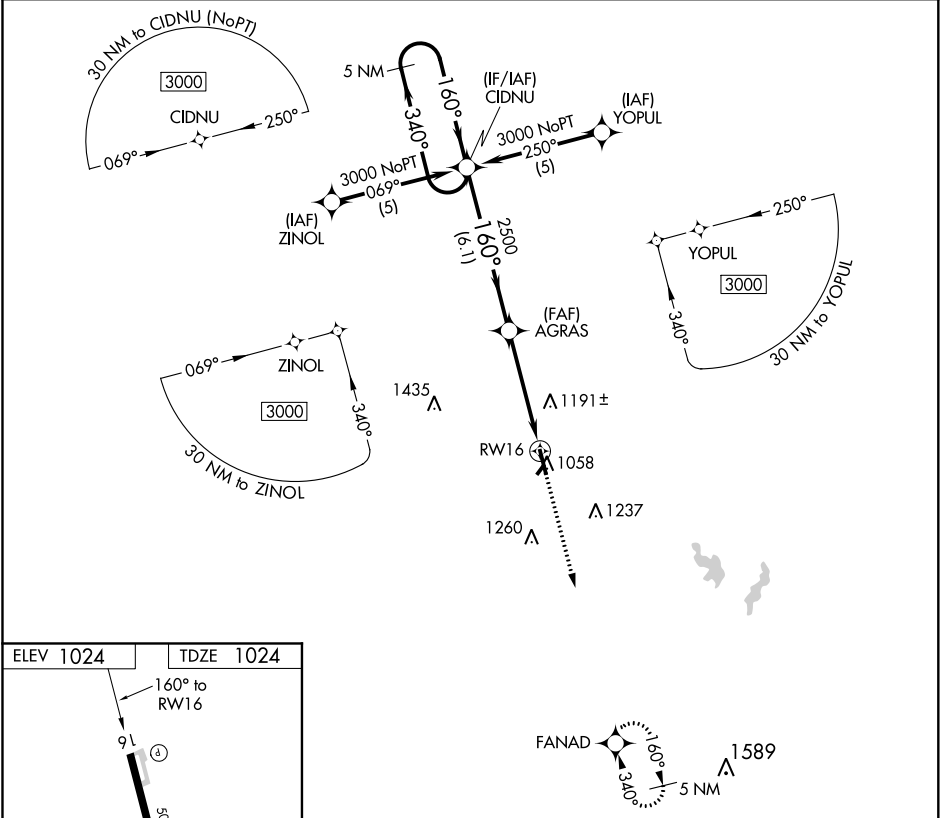
APP CRS	Rwy Idg	5004
160°	TDZE	1024
	Apt Elev	1024

RNAV (GPS) RWY 16

SEMINOLE MUNI (SRE)

RNP APCH.	Procedure NA at night. Circling NA to Rws 5 and 23. Rwy 16 helicopter visibility reduction below 1 SM NA. When local altimeter setting not received, use Shawnee Rgnl altimeter setting and increase all MDAs 40 feet.	MISSED APPROACH: Climb to 3000 direct FANAD and hold.
-----------	--	---

AWOS-3 118.625	FORT WORTH CENTER 132.2 338.35	UNICOM 122.8
-------------------	-----------------------------------	-----------------



5 NM Holding Pattern		VGSi and descent angles not coincident (VGSi Angle 3.00/TCH 27).		3000	FANAD
3000		CIDNU		AGRAS	RW16
340°		160°		2500	
		6.1 NM		4.4 NM	
CATEGORY	A	B	C	D	
LNAV MDA	1500-1	476 (500-1)	1500-1¼ 476 (500-1¼)	NA	
CIRCLING	1500-1	476 (500-1)	1560-1½ 536 (600-1½)	NA	

SC-1, 31 DEC 2020 to 28 JAN 2021

SC-1, 31 DEC 2020 to 28 JAN 2021