

APP CRS
354°

Rwy Idg
TDZE
Apt Elev

4000
984
985

RNAV (GPS) RWY 35

CHANDLER RGNL (CQB)

RNP APCH.

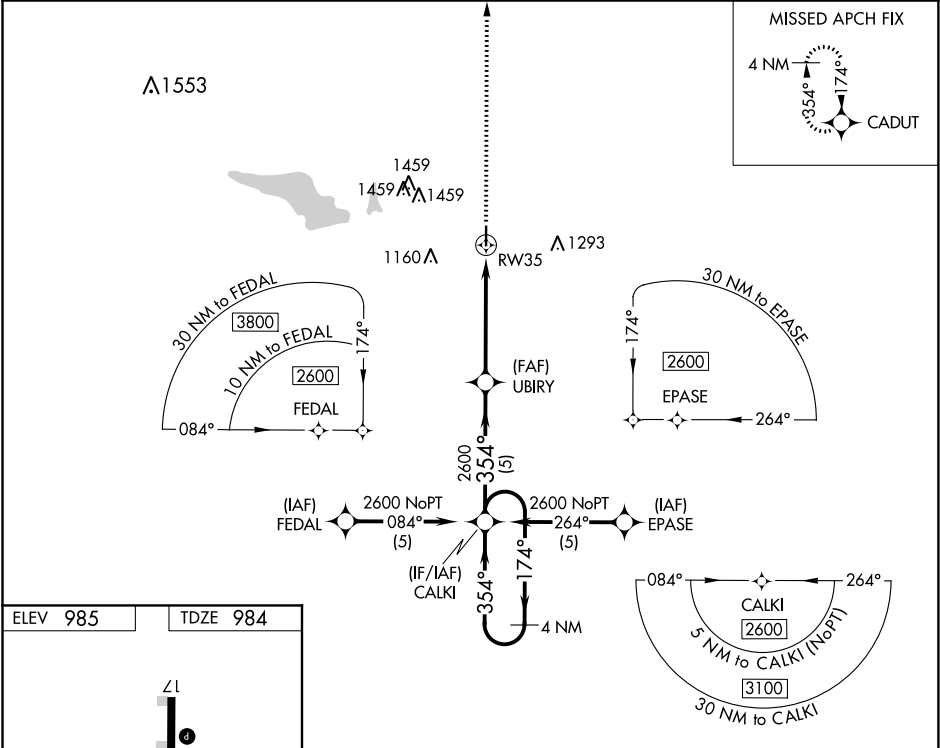
▼

▲ NA

When local altimeter setting not received, use Shawnee altimeter setting and increase all MDA 80 feet; increase LNAV Cat C visibility 1/8 SM. VDP NA with Shawnee Rgnl altimeter setting.

MISSED APPROACH: Climb to 2600 direct CADUT and hold.

AWOS-3 119.275	KANSAS CITY CENTER 127.8 319.1	CTAF 122.9 0
-------------------	-----------------------------------	-----------------



ELEV 985

TDZE 984

35

4000 X 60

0.6% Up

354° to RW35

MIRL Rwy 17-35 0

2600

CADUT

VGSI and descent angles not coincident (VGSI Angle 3.00/TCH 42).

*LNAV only.

*1.1 NM to RW35

UBIRY

CALKI

4 NM Holding Pattern

354°

174°

2600

GP 3.00° TCH 30

CATEGORY	A	B	C	D
GLS PA DA	NA			
LNAV/VNAV DA	NA			
LNAV MDA	1320-1	335 (400-1)	NA	