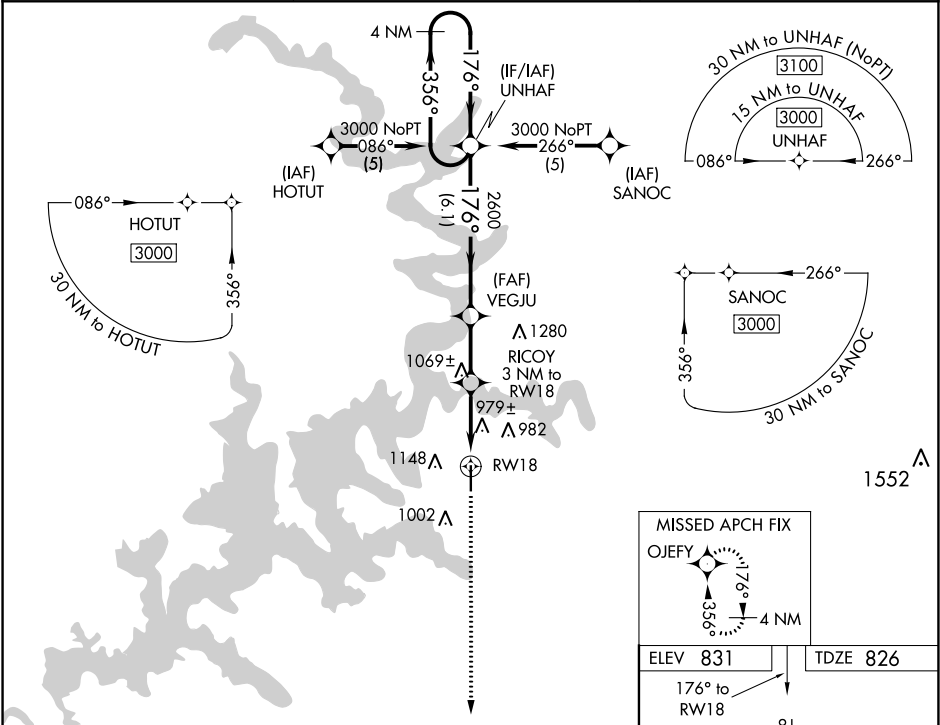


WAAS 58308 W18A	APP CRS 176°	Rwy ldg 5200 TDZE 826 Apt Elev 831
-------------------------------------	------------------------	---

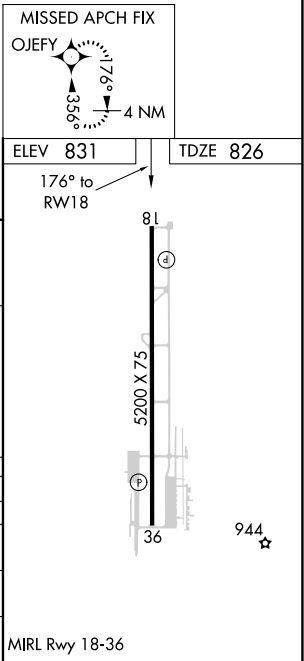
RNAV (GPS) RWY 18
GROVE MUNI (G.MJ)

<p>▼ For uncompensated Baro-VNAV systems, LNAV/VNAV NA below -16°C (4°F) or above 54°C (130°F). DME/DME RNP-0.3 NA. Visibility reduction by helicopters NA.</p>	MISSED APPROACH: Climb to 3000 direct OJEFY and hold.
--	---

AWOS-3 119.025	KANSAS CITY CENTER 128.8 354.1	UNICOM 122.8 (CTAF)
--------------------------	--	-------------------------------



VGSI and RNAV glidepath not coincident (VGSI Angle 2.75°\TCH 31°).				
4 NM Holding Pattern UNHAF				
3000 ← 356° → 176° → VEGJU RICOY 3 NM to RW18 RW18				
GP 3.00° TCH 40				
2600 *1820				
6.1 NM 2.4 NM 3 NM				
CATEGORY	A	B	C	D
LPV DA	1153-1¼	327 (400-1¼)		NA
LNAV/VNAV DA	1346-2	520 (600-2)		NA
LNAV MDA	1240-1	414 (500-1)	1240-1¼	NA
			414 (500-1¼)	
CIRCLING	1500-1	669 (700-1)	1500-1¼	NA
			669 (700-1¼)	



SC-1, 31 DEC 2020 to 28 JAN 2021

SC-1, 31 DEC 2020 to 28 JAN 2021