

WAAS CH <b>81923</b> <b>W18A</b>	APP CRS <b>174°</b>	Rwy Idg <b>5001</b> TDZE <b>1177</b> Apt Elev <b>1193</b>
--	------------------------	---

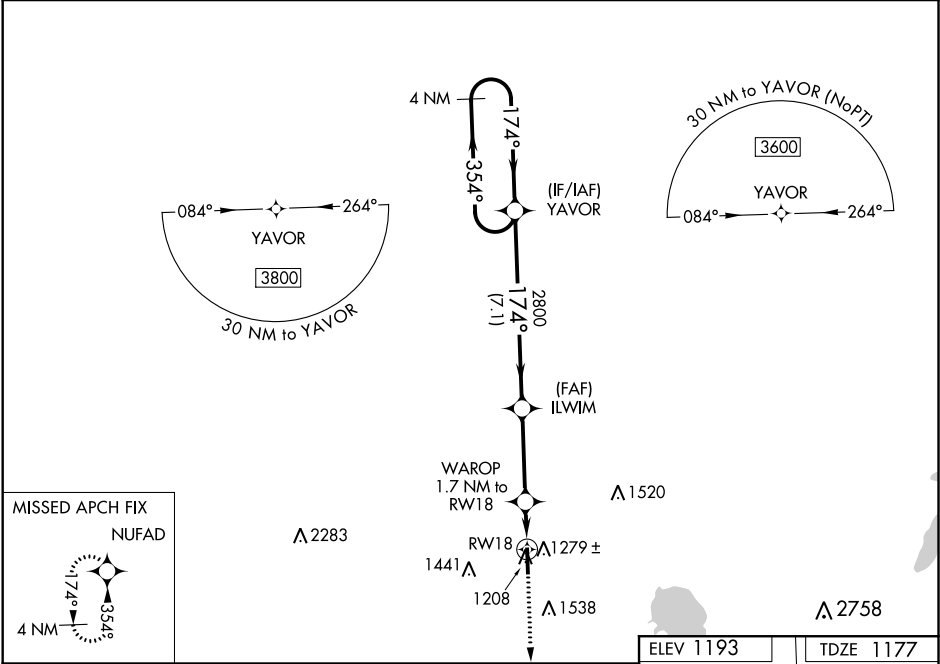
RNAV (GPS) RWY 18

SUNDANCE (HSD)

For uncompensated Baro-VNAV systems, LNAV/VNAV NA below -17°C (2°F) or above 54°C (130°F). Baro-VNAV and VDP NA when using Wiley Post altimeter setting. DME/DME RNP-0.3 NA. Circling Rwy 36 NA at night.

MISSED APPROACH:  
Climb to 3200 direct  
NUFAD and hold.

AWOS-3 <b>120.975</b>	OKE CITY APP CON <b>124.6 266.8</b>	CLNC DEL <b>123.7</b>	UNICOM <b>122.7 (CTAF) 0</b>
--------------------------	--	--------------------------	---------------------------------



4 NM Holding Pattern		VGSI and RNAV glidepath not coincident (VGSI Angle 3.00/TCH 30).		3200	NUFAD
3600		YAVOR		ILWIM	WAROP 1.7 NM to RW18
GP 3.00° TCH 40		2800		*1.1 NM to RW18	
7.1 NM		3.4 NM		0.6	
CATEGORY	A	B	C	D	
LPV DA	1427-1		250 (300-1)	NA	
LNAV/VNAV DA	1473-1½		296 (300-1½)	NA	
LNAV MDA	1540-1	363 (400-1)	1540-1½ 363 (400-1½)	NA	
CIRCLING	1740-1 547 (600-1)	1780-1 587 (600-1)	1840-1¾ 647 (700-1¾)	NA	

