

WAAS  
CH **82032**  
**W17A**

APP CRS  
**174°**

Rwy Idg **5100**  
TDZE **1605**  
Apt Elev **1605**

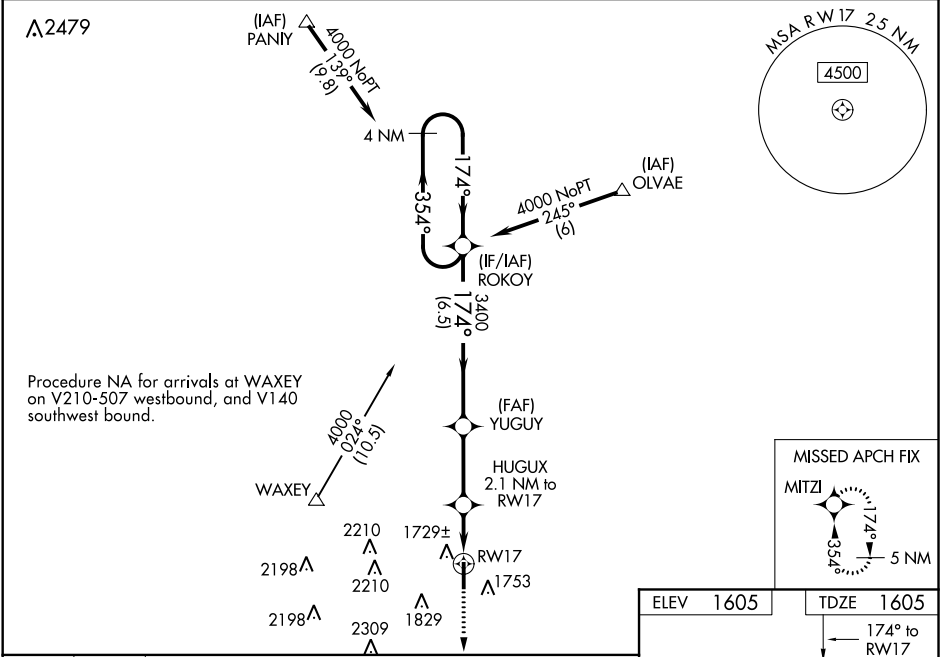
RNAV (GPS) RWY 17

THOMAS P STAFFORD (OJA)

Baro-VNAV NA when using Clinton Rgnl altimeter setting. For uncompensated Baro-VNAV systems, LNAV/VNAV NA below -18°C (0°F) or above 54°C (130°F). DME/DME RNP-0.3 NA. Helicopter visibility reduction below 1 SM NA. Night Landing: Rwy 17, 35 operational VGSI required, remain on or above VGSI glidepath until threshold. When local altimeter setting not received, use Clinton Rgnl altimeter setting and increase all DA 32 feet and all MDA 40 feet. Increase LNAV Cat C visibility to 1½ mile, and Circling Cat C visibility to 2½ mile.

MISSED APPROACH:  
Climb to 4500 direct MITZI and hold.

AWOS-3 <b>118.575</b>	FORT WORTH CENTER <b>128.4 269.37</b>	UNICOM <b>122.8 (CTAF)</b>
--------------------------	--	-------------------------------



ELEV 1605		TDZE 1605	
4500 MITZI		174° to RW17	
*LNAV only		GP 3.34 TCH 57	
HUGUX 2.1 NM to RW17		5100 X 75	
RW17		35	
YUGUY		3400	
ROKOY		3400	
4 NM Holding Pattern		354°	
2.1 NM		2.8 NM	
6.5 NM		4 NM	
CATEGORY		A	
LPV DA		1875-1 270 (300-1)	
LNAV/VNAV DA		1904-1 299 (300-1)	
LNAV MDA		1980-1 375 (400-1)	
CIRCLING		2080-1 475 (500-1)	
		2140-1 535 (600-1)	
		2380-2¼ 775 (800-2¼)	
		NA	
		REIL Rwy 17 and 35	
		MIRL Rwy 17-35	