

WAAS CH 86718 W17A	APP CRS 174°	Rwy Idg 5001 TDZE 971 Apt Elev 971
--	------------------------	---

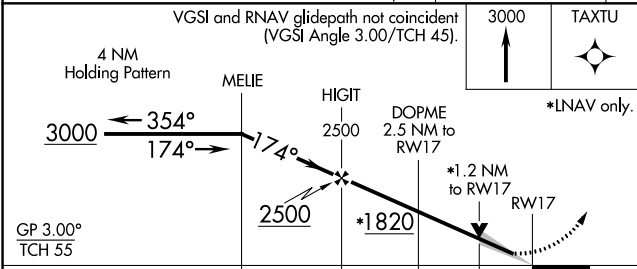
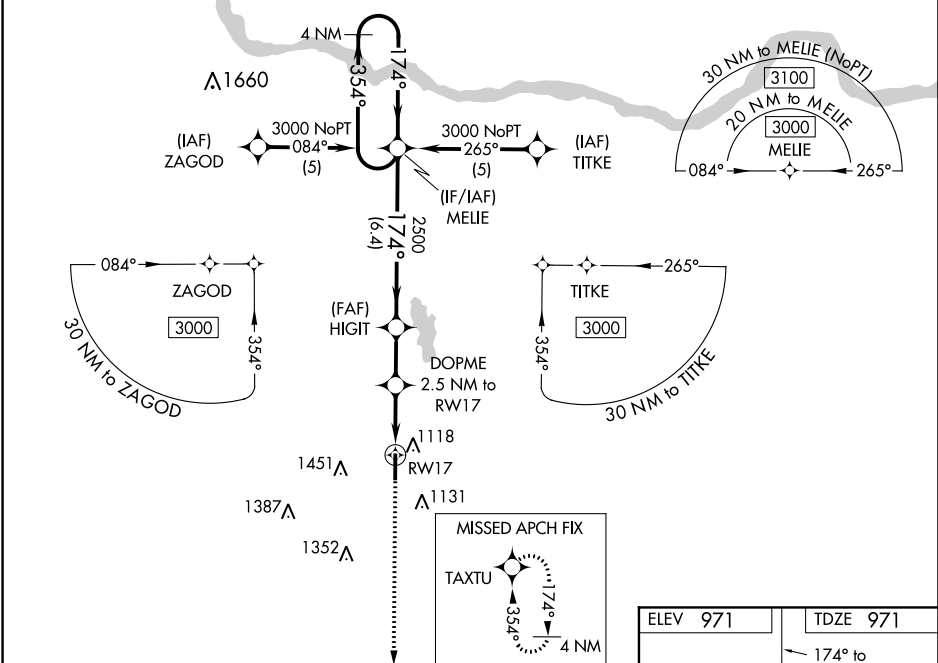
RNAV (GPS) RWY 17
PAULS VALLEY MUNI (PVJ)

RNP APCH.

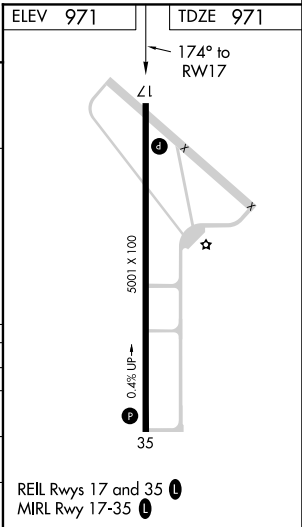
When local altimeter setting not received, use Ardmore Downtown Executive altimeter setting and increase all DA 97 feet and all MDA 100 feet and LNAV/VNAV visibility ¼ SM all Cats, LNAV Cat C, D visibility ¼ SM and Circling Cat C visibility ¼ SM, and Cat D visibility ½ SM. Baro-VNAV and VDP NA when using Ardmore Downtown Executive altimeter setting. For uncompensated Baro-VNAV systems, LNAV/VNAV NA below -16°C or above 46°C.

MISSED APPROACH:
Climb to 3000 direct TAXTU and hold.

AWOS-3 118.675	FORT WORTH CENTER 124.75 323.0	UNICOM 122.8 (CTAF) 0
--------------------------	--	---------------------------------



GP 3.00° TCH 55	MELIE	HIGIT	DOPME 2.5 NM to RW17	RW17
	6.4 NM	2.1 NM	1.3 NM	1.2 NM
CATEGORY	A	B	C	D
LPV DA	1171-1	200 (200-1)		
LNAV/ VNAV DA	1413-1½	442 (500-1½)		
LNAV MDA	1420-1 449 (500-1)	1420-1¼ 449 (500-1¼)	1420-1¾ 449 (500-1¾)	
CIRCLING	1440-1 469 (500-1)	1540-1½ 569 (600-1½)	1760-2 789 (800-2)	



SC-1, 31 DEC 2020 to 28 JAN 2021

SC-1, 31 DEC 2020 to 28 JAN 2021