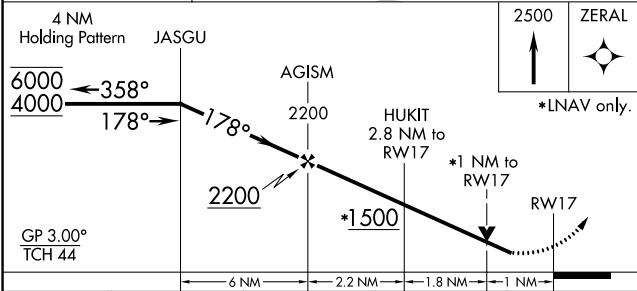
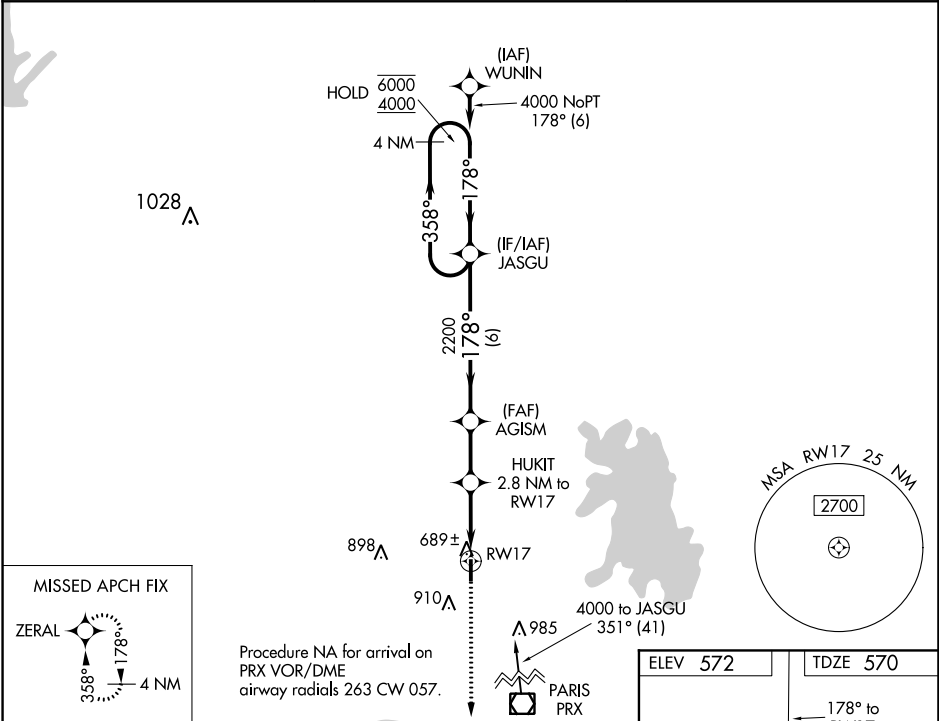


WAAS CH <b>50437</b> <b>W17A</b>	APP CRS <b>178°</b>	Rwy Idg TDZE <b>570</b> Apt Elev <b>572</b>
--	------------------------	---

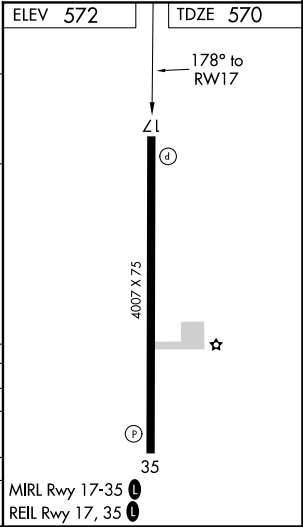
RNAV (GPS) RWY 17  
STAN STAMPER MUNI (HHW)

RNP APCH.	MISSED APPROACH: Climb to 2500 direct ZERAL and hold.
-----------	---

AWOS-3 <b>119.025</b>	FORT WORTH CENTER <b>127.6 307.2</b>	UNICOM <b>122.8 (CTAF) 0</b>
--------------------------	---	---------------------------------



CATEGORY	A	B	C	D
LPV DA		820-1	250 (300-1)	
LNAV/VNAV DA		870-1	300 (300-1)	
LNAV MDA		940-1	370 (400-1)	
CIRCLING	1220-1 648 (700-1)		1340-2¼ 768 (800-2¼)	1340-2½ 768 (800-2½)



SC-1, 31 DEC 2020 to 28 JAN 2021

SC-1, 31 DEC 2020 to 28 JAN 2021