

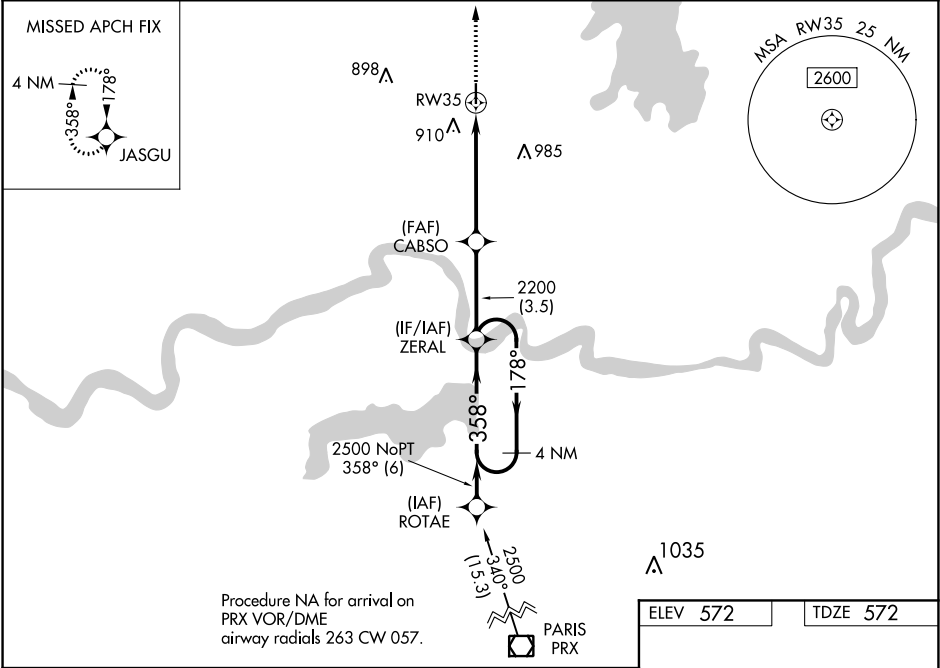
WAAS CH <b>86639</b> <b>W35A</b>	APP CRS <b>358°</b>	Rwy Idg TDZE Apt Elev	<b>4007</b> <b>572</b> <b>572</b>
--	------------------------	-----------------------------	---

**RNAV (GPS) RWY 35**  
STAN STAMPER MUNI (HHW)

▼ For uncompensated Baro-VNAV systems, LNAV/VNAV NA below -16°C (4°F) or above 54°C (130°F). Rwy 35 helicopter visibility reduction below 1 SM NA. DME/DME RNP-0.3 NA. Straight-in Rwy 35 and Circling Rwy 35 NA at night.

▲ MISSED APPROACH: Climb to 4000 direct JASGU and hold, continue climb-in-hold to 4000.

AWOS-3 <b>119.025</b>	FORT WORTH CENTER <b>127.6 307.2</b>	UNICOM <b>122.8 (CTAF) 0</b>
--------------------------	---	---------------------------------



4000 JASGU

CATEGORY	A	B	C	D
LPV DA	822-1		250 (300-1)	
LNAV/VNAV DA	1071-1 3/8		499 (500-1 3/8)	
LNAV MDA	1020-1 448 (500-1)		1020-1 3/8 448 (500-1 3/8)	
CIRCLING	1220-1 648 (700-1)		1340-2 1/4 768 (800-2 1/4) 1340-2 1/2 768 (800-2 1/2)	

ELEV 572 TDZE 572