

WAAS CH 63214 W18A	APP CRS 175°	Rwy Idg 5200 TDZE 718 Apt Elev 733
--	------------------------	---

RNAV (GPS) RWY 18

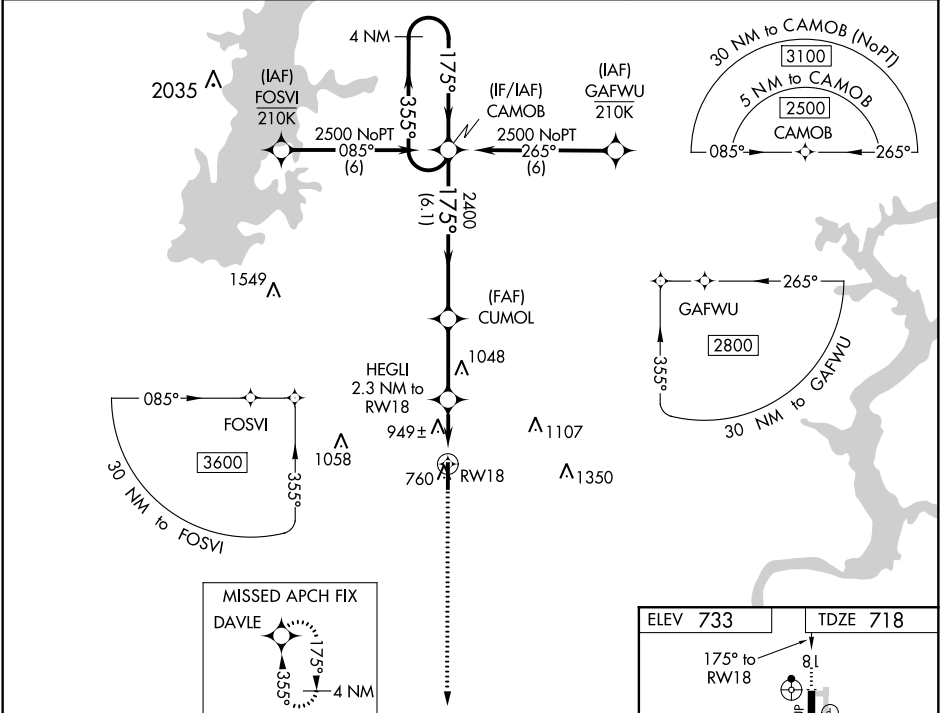
CLAREMORE RGNL (GCM)

For uncompensated Baro-VNAV systems, LNAV/VNAV NA below -16°C (4°F) or above 54°C (130°F). DME/DME RNP-0.3 NA. For inop ALS, increase LNAV/VNAV Cats A/B visibility to 1½ SM.

ODALS

MISSED APPROACH: Climb to 2400 direct DAVLE and hold.

AWOS-3 119.925	TULSA APP CON 119.1 351.8	UNICOM 122.7 (CTAF) 0
--------------------------	-------------------------------------	---------------------------------



4 NM Holding Pattern		CAMOB		CUMOL		HEGLI 2.3 NM to RW18		2400	DAVLE
2500 ← 355°		175° →		175°		*1.460		*LNAV only.	
GP 3.00° TCH 43		2400		*1.4 NM to RW18		RW18			
		6.1 NM		2.9 NM		0.9 NM		1.4 NM	
CATEGORY	A	B		C		D			
LPV DA	968-¾		250 (300-¾)				NA		
LNAV/VNAV DA	1281-1½		563 (600-1½)				NA		
LNAV MDA	1200-¾ 482 (500-¾)		1200-1¼ 482 (500-1¼)				NA		
CIRCLING	1260-1 527 (600-1)		1380-1¾ 647 (700-1¾)				NA		

