

WAAS CH 72899 W16A	APP CRS 159°	Rwy Idg TDZE 1287 Apt Elev 1288	RNAV (GPS) RWY 16 NORTHWEST ARKANSAS NATIONAL (XNA)
--	------------------------	---	---

⚠

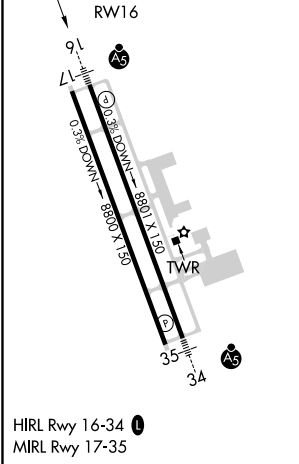
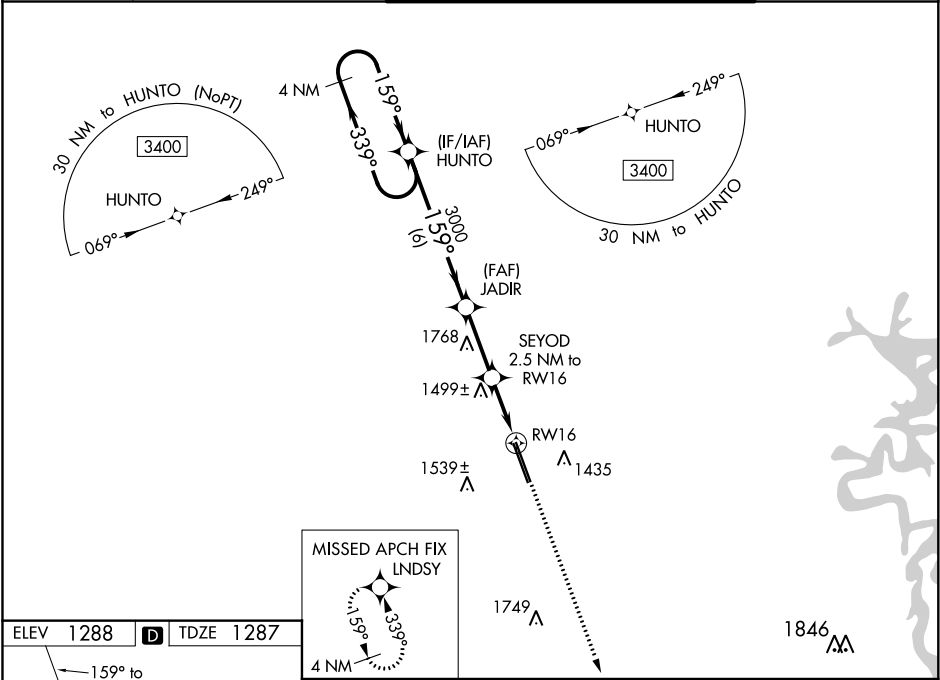
For uncompensated Baro-VNAV systems, LNAV/VNAV NA below -15°C (5°F) or above 54°C (130°F). DME/DME RNP-0.3 NA. For inop ALS increase LPV Cat E visibility to RVR 4000, LNAV/VNAV all Cats and LNAV Cat C/D/E visibility to 1 3⁄8 mile. ** RVR 1800 authorized with use of FD or AP or HUD to DA.

MALSR

MISSED APPROACH:

Climb to 3400 direct LNDY and hold.

ATIS 119.425	RAZORBACK APP CON ★ 121.0 244.575	NORTHWEST ARKANSAS NATIONAL TOWER ★ 127.1 (CTAF) 0	GND CON 121.9
------------------------	---	---	-------------------------



4 NM Holding Pattern		VGSI and RNAV glidepath not coincident (VGSI Angle 3.00/TCH 52).				3400 ↑	LNDY ✦
3400 ←339° 159°→		HUNTO	JADIR 3000	SEYOD 2.5 NM to RW16	*LNAV only.		
GP 3.00° TCH 57		159°	3000	*2140	*1.3 NM to RW16	↓ RW16	
		6 NM		2.7 NM	1.2	1.3	
CATEGORY	A	B	C	D	E		
LPV DA **	1487/24 200 (200-½)						
LNAV/ VNAV DA	1722/50 435 (500-1)						
LNAV MDA	1760/24	473 (500-½)	1760/50 473 (500-1)				
C CIRCLING	1760-1	472 (500-1)	2040-2¼ 752 (800-2¼)	2080-2½ 792 (800-2½)	2080-2¾ 792 (800-2¾)		