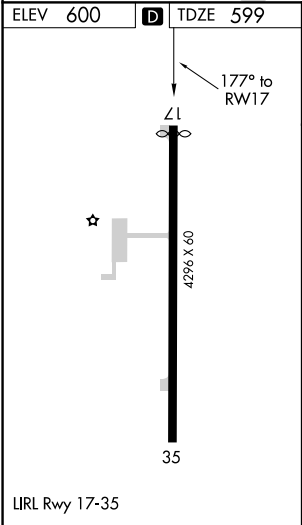
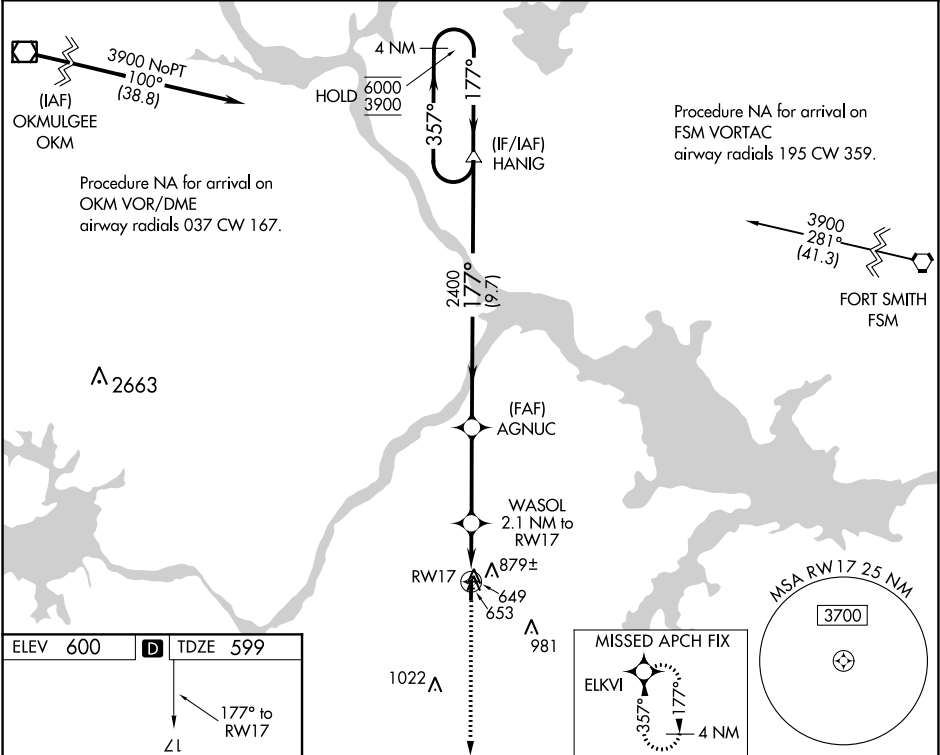


WAAS CH 65822 W17A	APP CRS 177°	Rwy Idg TDZE 599 Apt Elev 600
--	------------------------	---

RNAV (GPS) RWY 17
STIGLER RGNL (GZL)

RNP APCH. ▼ Rwy 17 helicopter visibility reduction below 1 SM NA. Procedure NA at night.	MISSED APPROACH: Climb to 3900 direct ELKVI and hold, continue climb-in-hold to 3900.
--	--

AWOS-3 118.575	FORT WORTH CENTER 132.2 338.35	CTAF 122.9
--------------------------	--	----------------------



3900 ELKVI Visual Segment - Obstacles.		4 NM Holding Pattern	
WASOL 2.1 NM to RW17		AGNUC	
RW17		HANIG	
1300		2400	
2.1 NM		3.4 NM	
9.7 NM		4 NM	
CATEGORY	A	B	C D
LP MDA	900-1	301 (300-1)	NA
LNAV MDA	1020-1	421 (500-1)	NA
C CIRCLING	1180-1	580 (600-1)	NA

SC-1, 31 DEC 2020 to 28 JAN 2021

SC-1, 31 DEC 2020 to 28 JAN 2021