

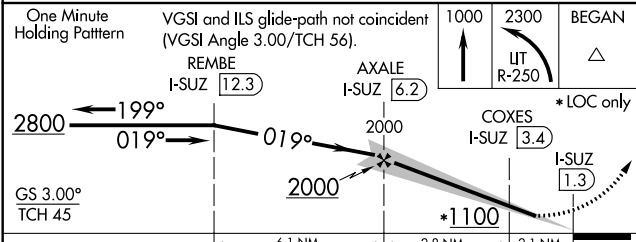
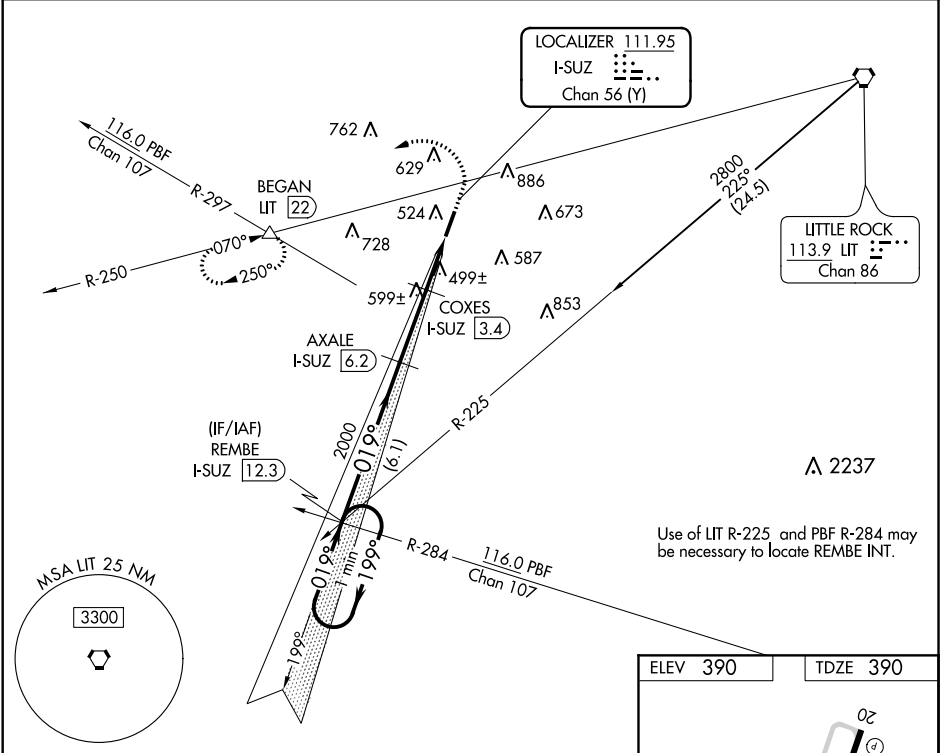
LOC/DME I-SUZ 111.95 Chan 56 (Y)	APP CRS 019°	Rwy Idg TDZE 390 Apt Elev 390
--	------------------------	---

ILS or LOC/DME RWY 2
SALINE COUNTY RGNL (SUZ)

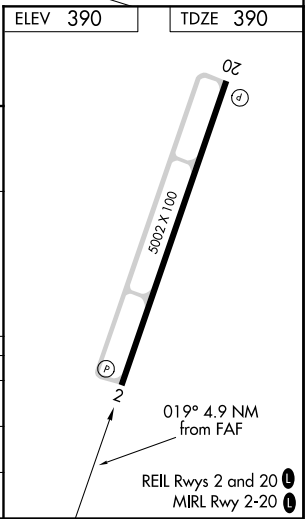
NA Visibility reduction by helicopters NA. Use Little Rock/Bill and Hillary Clinton National/Adams Field altimeter setting; when not received, use Hot Springs altimeter setting and increase all DA 41 feet and all MDA 60 feet. Increase S-ILS 2 all Cats visibility ¼ mile.

MISSED APPROACH: Climb to 1000 then climbing left turn to 2300 via LIT VORTAC R-250 to BEGAN INT/LIT 22 DME and hold.

AWOS-3 132.125	LITTLE ROCK APP CON 119.5 306.2	UNICOM 122.8 (CTAF) 0
--------------------------	---	--



CATEGORY	A	B	C	D
S-ILS 2	693-1 303 (400-1)			
S-LOC 2	820-1	430 (500-1)	820-1½ 430 (500-1½)	820-1½ 430 (500-1½)
CIRCLING	1040-1 650 (700-1)	1140-1½ 750 (800-1½)	1140-2½ 750 (800-2½)	1140-2½ 750 (800-2½)



SC-1, 31 DEC 2020 to 28 JAN 2021

SC-1, 31 DEC 2020 to 28 JAN 2021