

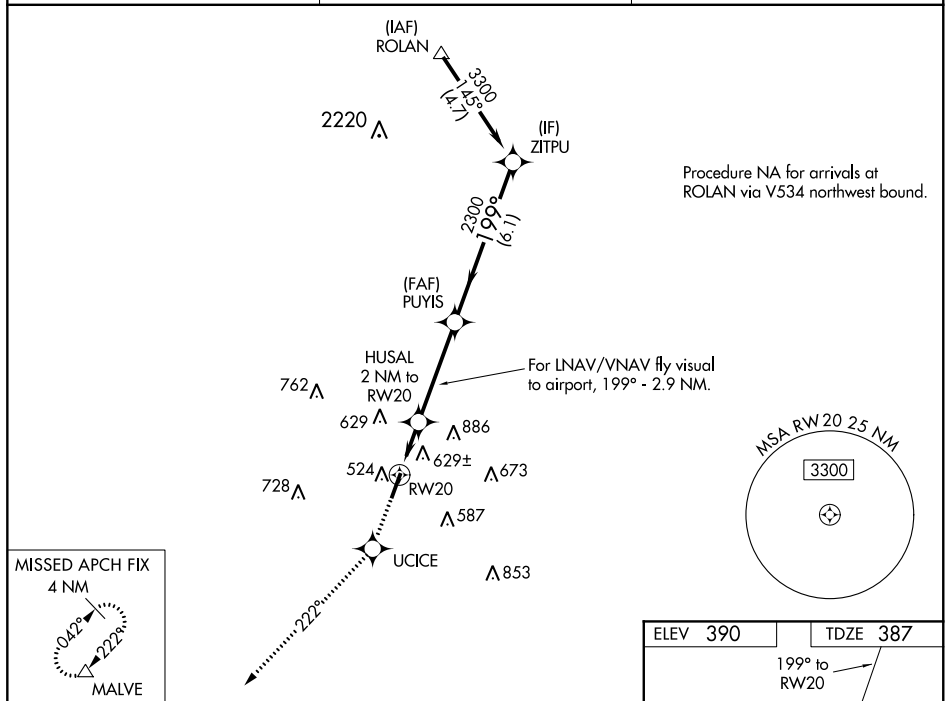
WAAS CH 40309 W20A	APP CRS 199°	Rwy Idg 5002 TDZE 387 Apt Elev 390
--	------------------------	---

RNAV (GPS) RWY 20
SALINE COUNTY RGNL (SUZ)

NA Baro-VNAV NA. DME/DME RNP-0.3 NA. Visibility reduction by helicopters NA. Use Little Rock/Bill and Hillary Clinton National/Adams Field altimeter setting; when not received, use Hot Springs altimeter setting and increase all DA 41 feet and all MDA 60 feet. Increase LPV visibility all Cat's ¼ mile, LNAV/VNAV visibility Cat C ¼ mile and LNAV visibility Cat C, D ¼ mile.

MISSED APPROACH: Climb to 2000 direct UCICE and via 222° track to MALVE and hold.

AWOS-3 132.125	LITTLE ROCK APP CON 119.5 306.2	UNICOM 122.8 (CTAF) 0
--------------------------	---	---------------------------------



2000 ↑	UCICE ✱	222° tr	MALVE △	For LNAV/VNAV fly visual to airport, 199° - 2.9 NM.			
*LNAV only.							
CATEGORY	A		B		C		D
LPV DA	827-1½		440 (500-1½)				
LNAV/VNAV DA	1330-2	943 (1000-2)	1330-2¾ 943 (1000-2¾)		1330-3 943 (1000-3)		
LNAV MDA	960-1	573 (600-1)	960-1½ 573 (600-1½)		960-1¾ 573 (600-1¾)		
CIRCLING	1000-1 610 (700-1)	1140-1¼ 750 (800-1¼)	1140-2½ 750 (800-2½)		1140-2½ 750 (800-2½)		

