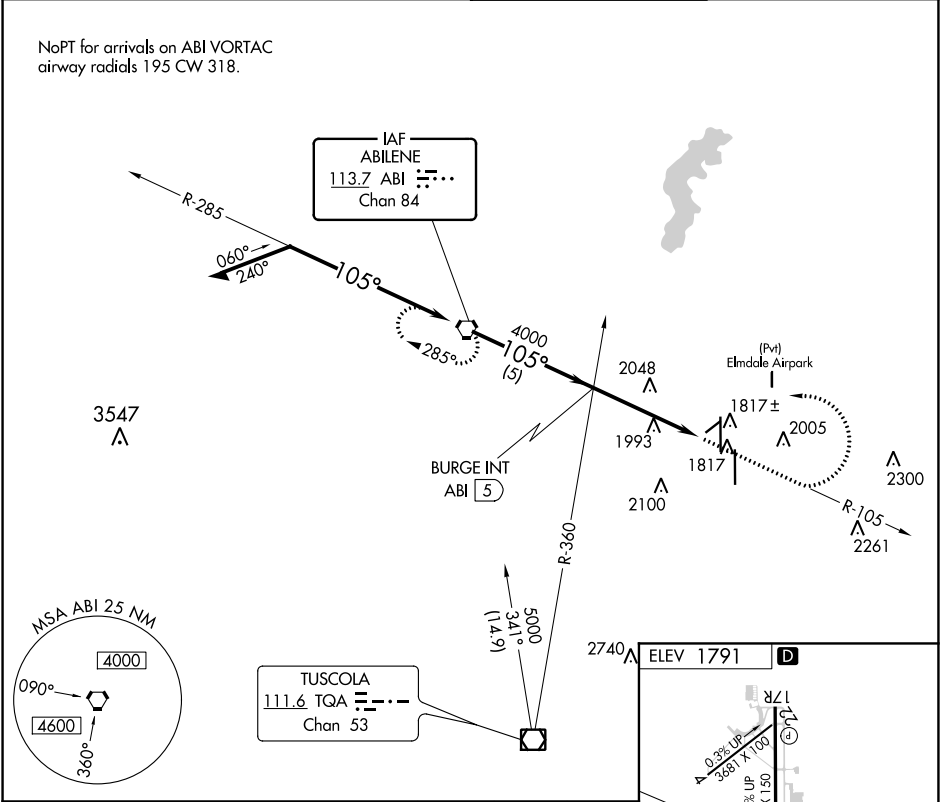


VOR ABI 113.7 Chan 84	APP CRS 105°	Rwy Idg TDZE Apt Elev N/A N/A 1791
---	------------------------	--

VOR or GPS-A
ABILENE RGNL (ABI)

ASR		MISSED APPROACH: Climb to 3000, then climbing left turn to 5000 direct ABI VORTAC and hold.	
ATIS 118.25	ABILENE APP CON 125.0 338.3 (EAST) 127.2 282.3 (WEST)	ABILENE TOWER 120.1 257.8	GND CON 121.7 348.6



<div>Remain within 10 NM</div> <div><div><div>3000</div><div>5000</div><div>ABI</div></div><div><div>ABI VORTAC</div><div>BURGE INT ABI (5)</div><div>ABI (9.3)</div></div></div> <div><div>5000</div><div>285°</div><div>105°</div><div>5000</div><div>105°</div><div>4000</div><div>5 NM</div><div>4.3 NM</div></div>					<div><div><div>105° 4.3 NM from FAF</div><div>REIL Rwy 35L MIRL Rwy 4-22 HIRL Rwys 17L-35R and 17R-35L</div></div><div><div>7208</div><div>0.4</div><div>35L</div><div>1940</div><div>7198 X 150</div><div>35R</div></div></div>																													
CATEGORY					FAF to MAP 4.3 NM																													
A					B					C					D																			
CIRCLING					2300-1 509 (600-1)					2320-1 529 (600-1)					2420-1¾ 629 (700-1¾)					2460-2 669 (700-2)														
					Knots					60					90					120					150					180				
					Min:Sec					4:18					2:52					2:09					1:43					1:26				

SC-2, 31 DEC 2020 to 28 JAN 2021

SC-2, 31 DEC 2020 to 28 JAN 2021