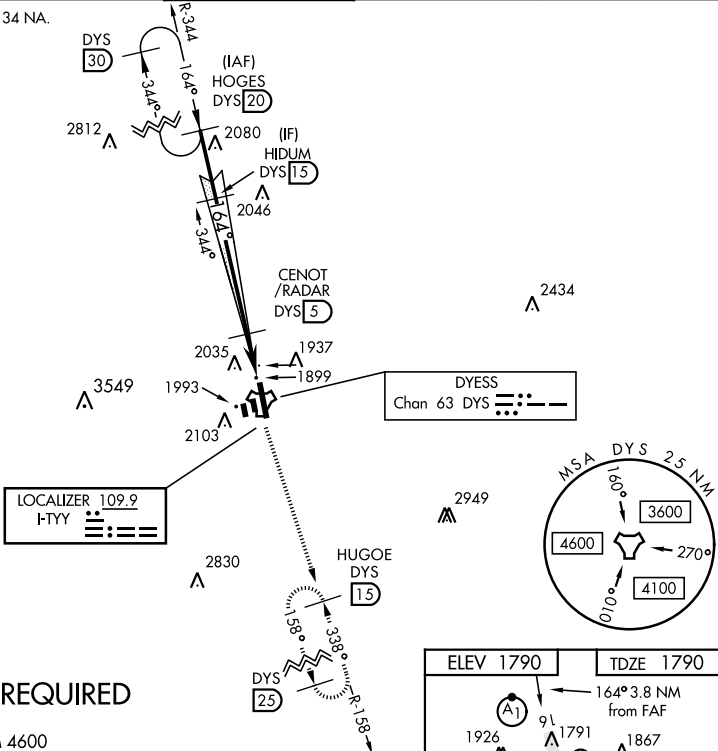


ABILENE, TEXAS

ILS or LOC W RWY 16

|  |   |   |                                |  |
|--|---|---|--------------------------------|--|
| LOC I-TYY<br><b>109.9</b>  | APCH CRS<br><b>164°</b>   | Rwy ldg <b>13,500</b><br>TDZE <b>1790</b><br>Arprt Elev <b>1790</b> | AL-2 [USAF]                    | DYESS AFB (KDYS)   |
| * When ALS inop, increase all CAT RVR to 40 and vis to ¾ mile.<br>** When ALS inop, increase CAT AB RVR to 55 and vis to 1 mile, CAT CDE vis to 1 ¼ miles. |   |   | ALSF-1<br>                     | MISSED APPROACH: Climb to 4000 via<br>DYS TACAN R-158 to HUGOE and hold. |
| ATIS ★<br><b>269.175</b>   | ABILENE APP CON<br><b>125.0 338.3</b> EAST<br><b>127.2 282.3</b> WEST | DYESS TOWER<br><b>133.0 257.675</b>                                 | GND CON<br><b>118.35 275.8</b> | ASR  |

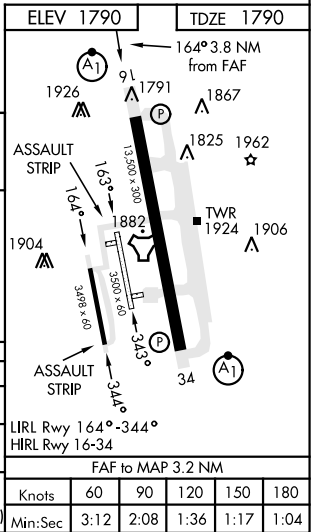
\*\*\* Circling to other than Rwy 34 NA.



RADAR or DME REQUIRED

EMERG SAFE ALT 100 NM 4600

|                                    |                       |                       |                         |   |
|------------------------------------|-----------------------|-----------------------|-------------------------|---|
| HOGES R-344 HIDUM CENOT/RADAR      |                       |                       |                         |   |
| 5000 164° 4300 2900 2900 164° 2900 |                       |                       |                         |   |
| 3.2 NM .6 NM                       |                       |                       |                         |   |
| CATEGORY                           | A                     | B                     | C                       | D E   |
| S-ILS 16 *                         | 1990/24               |                       | 200                     | (200-½)                                       |
| S-LOC 16 **                        | 2220/24               | 430 (500-½)           | 2220/40                 | 430 (500-¾)                                   |
| CIRCLING ***                       | 2300-1<br>510 (600-1) | 2320-1<br>530 (600-1) | 2460-1¾<br>670 (700-1¾) | 2460-2<br>670 (700-2) 2460-2¼<br>670 (700-2¼) |



ABILENE, TEXAS

32°25'N-99°51'W

DYESS AFB (KDYS)

Amtd 3 10NOV16

ILS or LOC W RWY 16

SC-2, 31 DEC 2020 to 28 JAN 2021

SC-2, 31 DEC 2020 to 28 JAN 2021