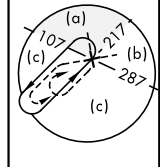
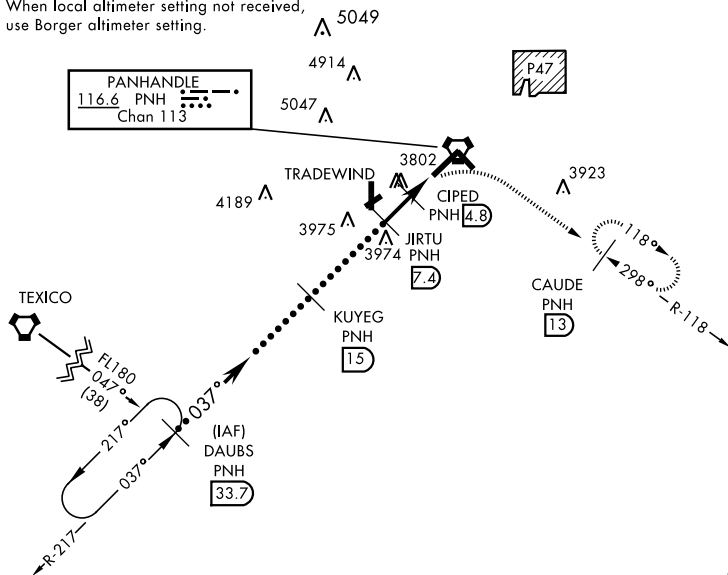


HI-VOR or TACAN RWY 4

VORTAC PNH 116.6 Chan 113	APCH CRS 037°	Rwy Idg 13,502 TDZE 3607 Arpt Elev 3607	JAL-19 [USAF]	RICK HUSBAND AMARILLO INTL (KAMA)	
<div><div>▽</div><div><div>* When ALS inop, increase CAT D vis to 1¼ miles, CAT E vis to 1½ miles.</div><div>** When ALS inop, increase CAT CD vis to 1½ miles, CAT E vis to 1¾ miles.</div></div></div>			<div><div>MALSR</div><div><div>A5</div><div>RECEIVED</div></div></div>	MISSED APPROACH: Climbing right turn to 5000 on heading 090° and PNH VORTAC R-118 to CAUDE/PNH 13 DME and hold.	
ATIS 118.85 350.3	AMARILLO APP CON 119.5 307.0	AMARILLO TOWER ★ 118.3 0 257.9	GND CON 121.9 348.6	CLNC DEL 121.65 239.275	ASR

When local altimeter setting not received,
use Borger altimeter setting.



DME REQUIRED

EMERG SAFE ALT 100 NM 5000

DAUBS
R-217

33.7

VDP N/A when using
BORGER altimeter setting.

5000

hdg 090°

CAUDE
PNH

13

FL180

037°

KUYEG
15

7000

JIRTU
7.4

5300

CIPED
4.8

3.6

4440

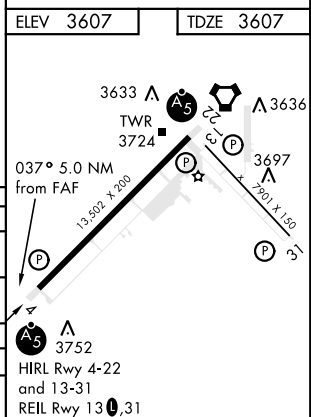
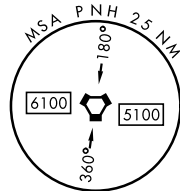
UHQAX
2.4

VORTAC

2.6 NM

2.4 NM

CATEGORY	C	D	E
S-4 *	4040/40 433 (500-¾)	4040/50 433 (500-1)	
C CIRCLING	4240-1¾ 633 (700-1¾)	4280-2¼ 673 (700-2¼)	4460-3 853 (900-3)
BORGER ALTIMETER SETTING			
S-4 **	4200-1¼	593	(600-1¼)
C CIRCLING	4400-2¼ 793 (900-2¼)	4440-2¾ 833 (900-2¾)	4620-3 1013 (1100-3)



HI-VOR or TACAN RWY 4