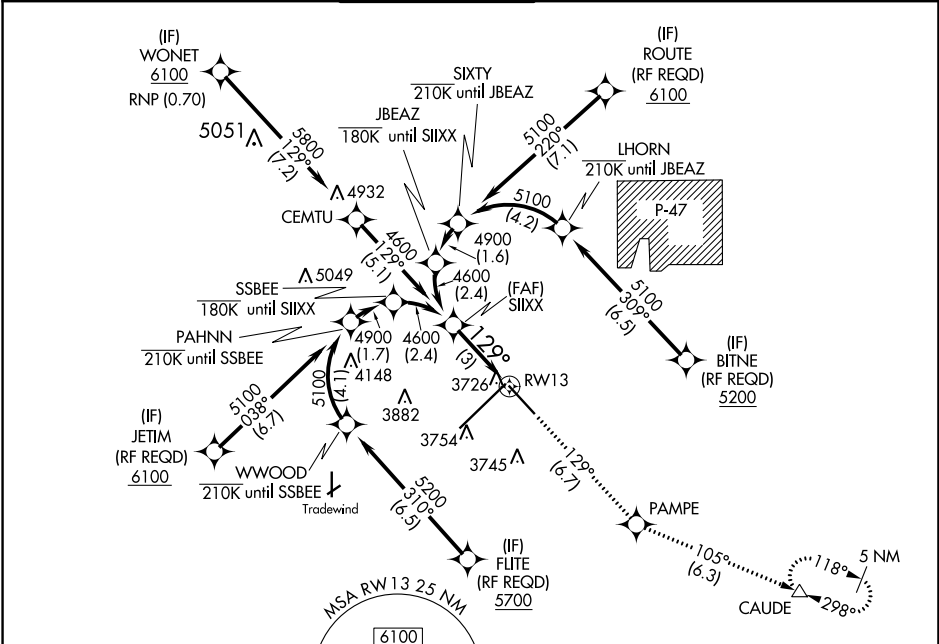


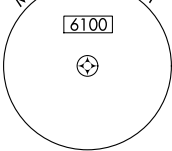
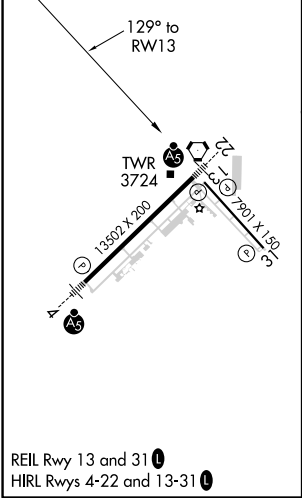
APP CRS	Rwy Idg	7901
129°	TDZE	3603
	Apt Elev	3607

RNAV (RNP) Z RWY 13
RICK HUSBAND AMARILLO INTL (AMA)

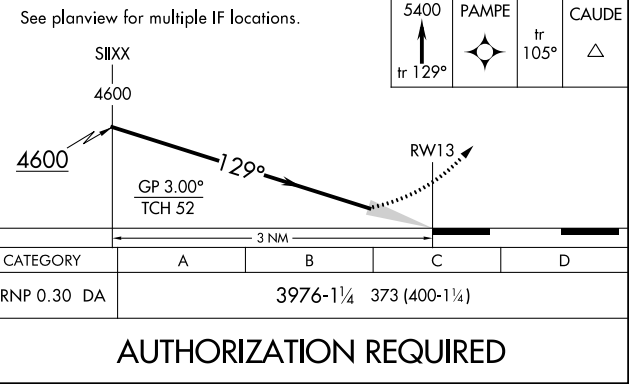
ASR For uncompensated Baro-VNAV systems, procedure NA below -14°C (7°F) or above 51°C (124°F). GPS required.		MISSED APPROACH: Climb to 5400 on track 129° to PAMPE and track 105° to CAUDE and hold.			
ATIS	AMARILLO APP CON★	AMARILLO TOWER★	GND CON	CLNC DEL	UNICOM
118.85 350.3	119.5 307.0	118.3(CTAF) 257.9	121.9 348.6	121.65 239.275	122.95



ELEV	3607	D	TDZE	3603
------	-------------	----------	------	-------------



RNAV 1 - GPS or RADAR REQUIRED



SC-2, 31 DEC 2020 to 28 JAN 2021

SC-2, 31 DEC 2020 to 28 JAN 2021