

| | | |
|-------------|----------|--------------|
| APP CRS | Rwy Idg | 13502 |
| 218° | TDZE | 3606 |
| | Apt Elev | 3607 |

RNAV (RNP) Z RWY 22

RICK HUSBAND AMARILLO INTL (AMA)

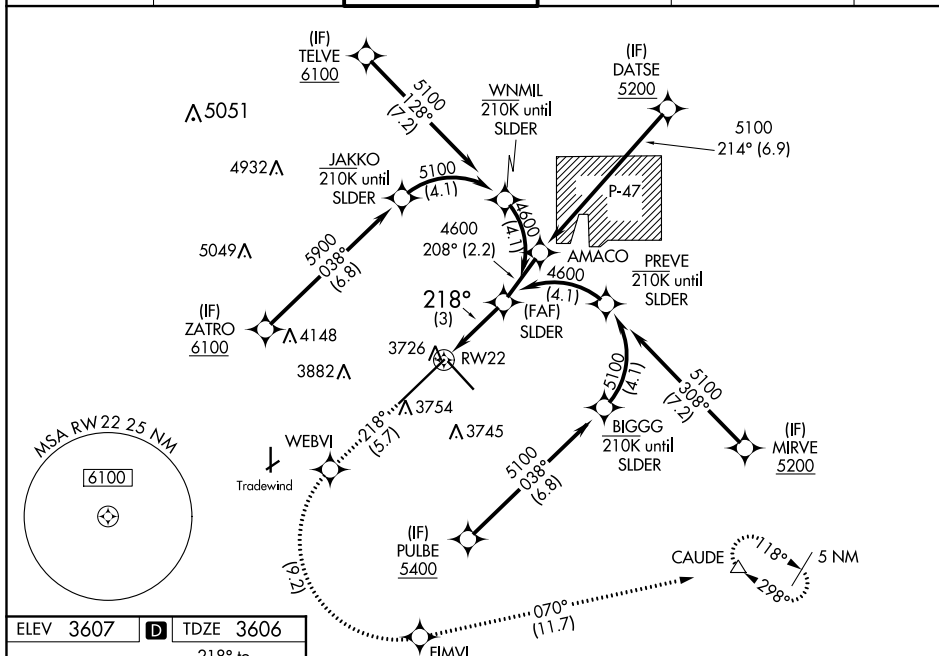
ASR For uncompensated Baro-VNAV systems, procedure NA below -14°C (7°F) or above 52°C (125°F). RF required. For inop ALS, increase RNP 0.14 all Cats visibility to ¾ SM and increase RNP 0.30 all Cats visibility to 1½ SM.

MALSR

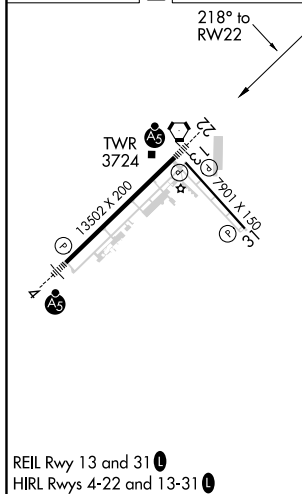


MISSED APPROACH: (Do not exceed 185 K until FIMVI) Climb to 5400 on track 218° to WEBVI, left turn to FIMVI, then track 070° to CAUDE and hold.

| | | | | | |
|---------------------|--------------------|--------------------------|--------------------|-----------------------|---------------|
| ATIS | AMARILLO APP CON* | AMARILLO TOWER* | GND CON | CLNC DEL | UNICOM |
| 118.85 350.3 | 119.5 307.0 | 118.3(CTAF) 257.9 | 121.9 348.6 | 121.65 239.275 | 122.95 |



| | | |
|-----------|----------|-----------|
| ELEV 3607 | D | TDZE 3606 |
|-----------|----------|-----------|

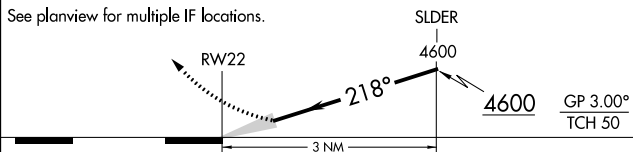


RNAV 1 - GPS or RADAR REQUIRED

VGSI and RNAV glidepath not coincident (VGSI Angle 3.00/TCH 77).

| | | | |
|---------|-------|-------|---------|
| 5400 | WEBVI | FIMVI | CAUDE |
| tr 218° | | | tr 070° |

See planview for multiple IF locations.



| CATEGORY | A | B | C | D |
|-------------|---|--------|-------------|---|
| RNP 0.14 DA | | 3884-½ | 278 (300-½) | |
| RNP 0.30 DA | | 3958-¾ | 352 (400-¾) | |

AUTHORIZATION REQUIRED