

WAAS CH 99418 W35A	APP CRS 355°	Rwy Idg TDZE Apt Elev	8802 2563 2573
--	------------------------	-----------------------------	---

RNAV (GPS) RWY 35

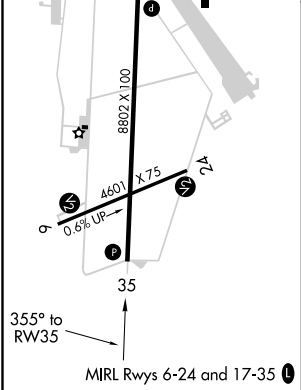
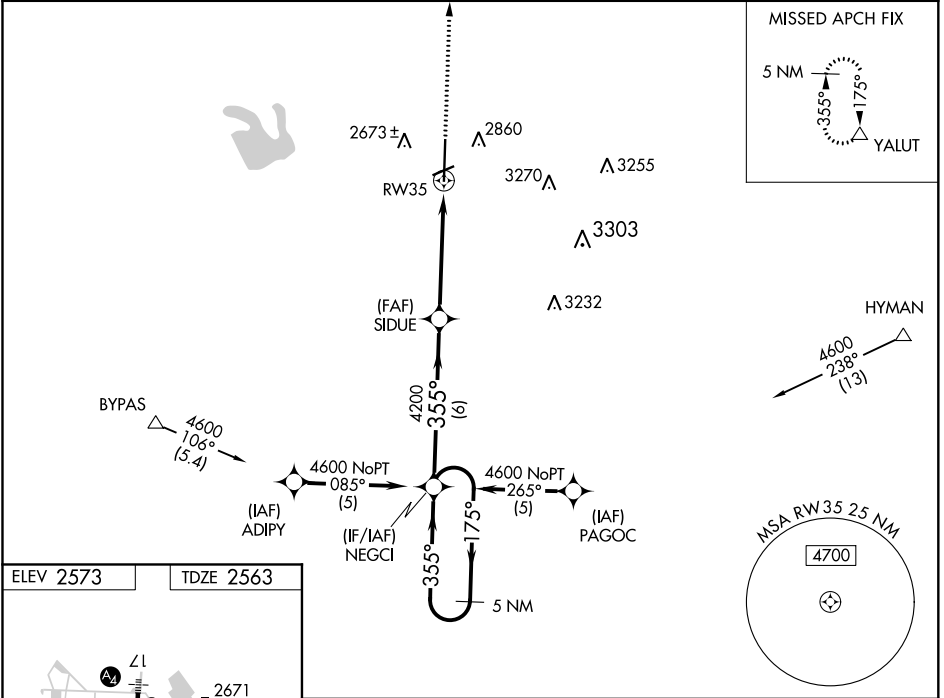
BIG SPRING McMAHON-WRINKLE (BPG)

RNP APCH.

Baro-VNAV NA when using Midland Intl Air and Space Port altimeter setting. For uncompensated Baro-VNAV systems, LNAV/VNAV NA below -20°C or above 43°C. VDP NA with Midland Intl Air and Space Port altimeter setting. When local altimeter setting not received, use Midland Intl Air and Space Port altimeter setting: increase all DA 130 feet and all MDA 140 feet; increase LPV all Cats visibility ¼ SM, LNAV/VNAV all Cats visibility ½ SM and LNAV Cat C and D visibility ½ SM.

MISSED APPROACH: Climb to 5200 direct YALUT and hold.

AWOS-3 118.025	FORT WORTH CENTER 133.7 350.2	UNICOM 122.8 (CTAF) 0
--------------------------	---	---------------------------------



5 NM Holding Pattern			NEGCI	SIDUE	4200	5200	YALUT
4600 ← 175° 355° →			355°	4200	*1.5 NM to RW35	*LNAV only. ↑ △	
GP 3.00° TCH 36			4200	4200	RW35		
			6 NM	3.5 NM	1.5 NM		
CATEGORY	A	B	C	D			
LPV DA	2813-1 250 (300-1)						
LNAV/ VNAV DA	2979-1½ 416 (500-1½)						
LNAV MDA	3060-1	497 (500-1)	3060-1¼ 497 (500-1¼)	3060-1½ 497 (500-1½)			

SC-2, 31 DEC 2020 to 28 JAN 2021

SC-2, 31 DEC 2020 to 28 JAN 2021