

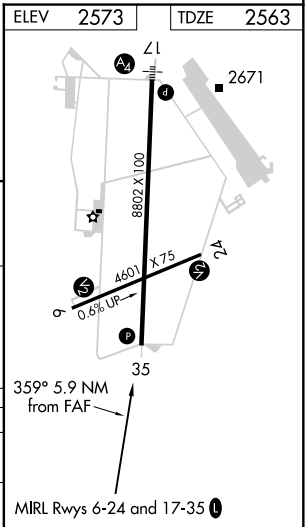
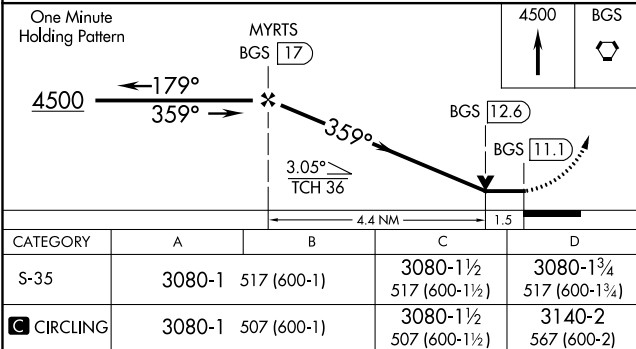
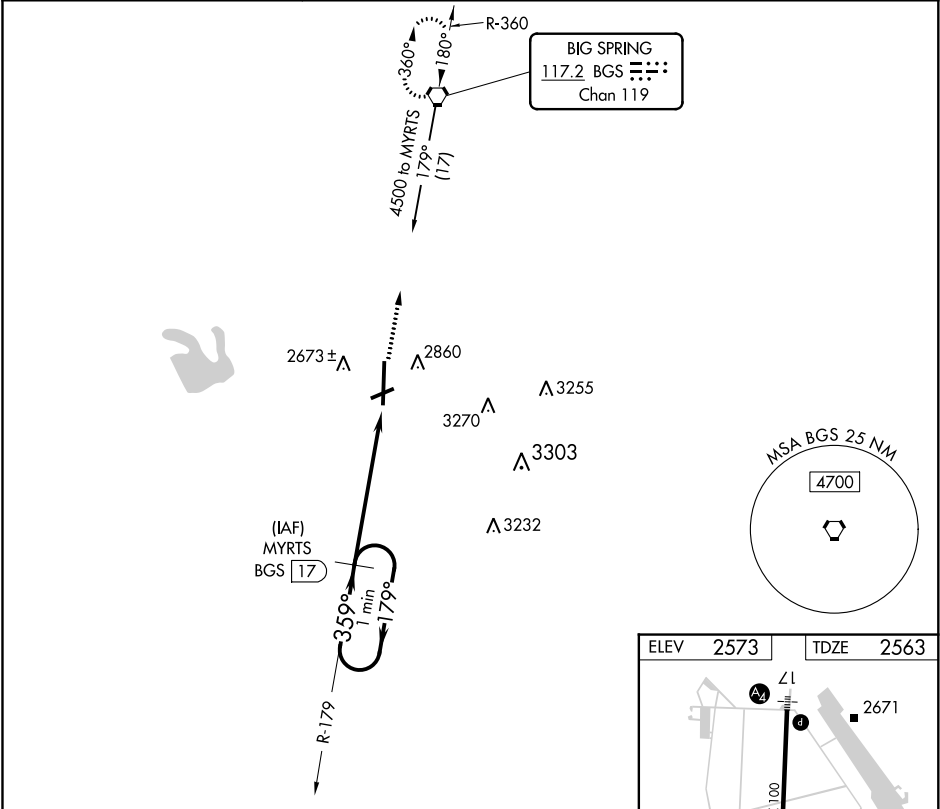
VORTAC BGS	APP CRS	Rwy Idg	8802
117.2	359°	TDZE	2563
Chan 119		Apt Elev	2573

VOR/DME RWY 35
BIG SPRING McMAHON-WRINKLE (BPG)

⚠ When VGSi inoperative, Circling Rwy 6 NA at night. Circling NA east of Rwy 17-35.
⚠ VDP NA when using Midland Intl Air and Space Port altimeter setting. When local altimeter setting not received, use Midland Intl Air and Space Port altimeter setting and increase all MDA 140 feet, increase S-35 Cats C and D and Circling Cats C and D visibility ¼ mile.

MISSED APPROACH: Climb to 4500 direct to BGS VORTAC and hold.

AWOS-3 118.025	FORT WORTH CENTER 133.7 350.2	UNICOM 122.8 (CTAF) 0
-------------------	----------------------------------	--------------------------



SC-2, 31 DEC 2020 to 28 JAN 2021

SC-2, 31 DEC 2020 to 28 JAN 2021