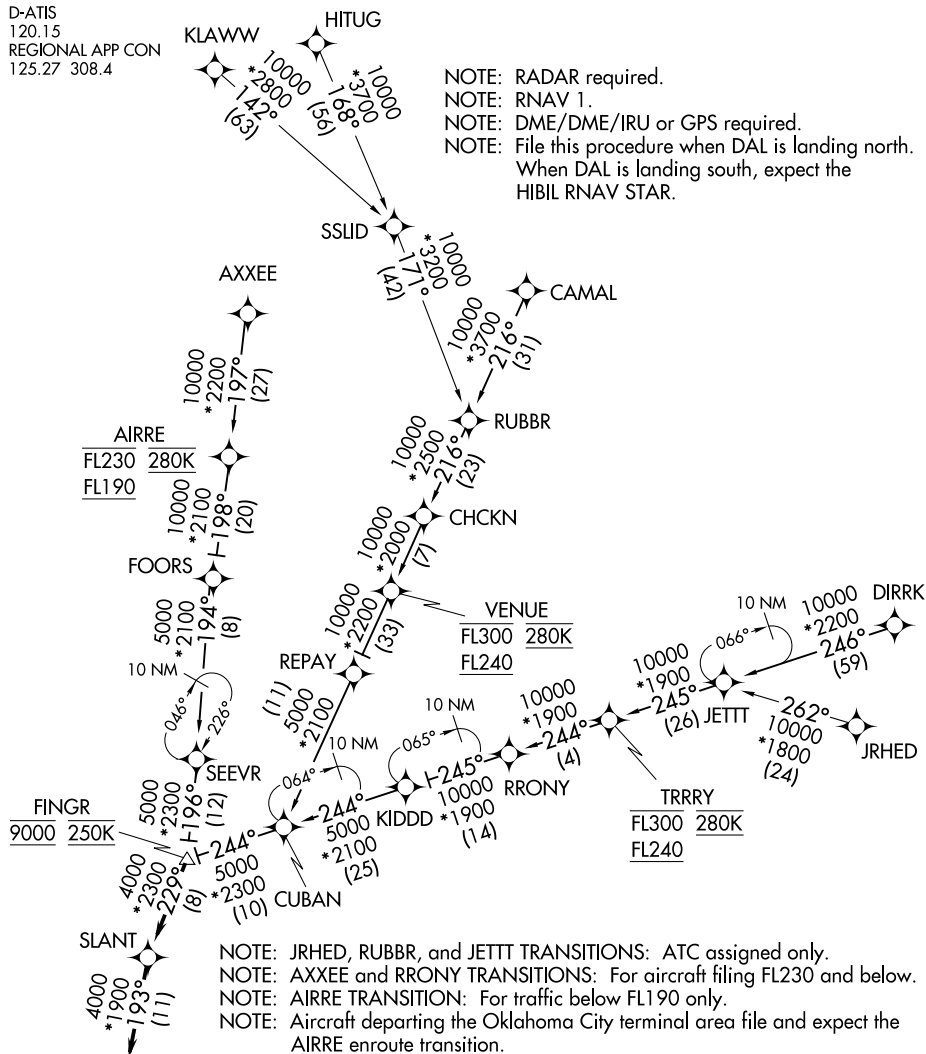


## CRIKT ONE ARRIVAL (RNAV)

D-ATIS  
120.15  
REGIONAL APP CON  
125.27 308.4

NOTE: RADAR required.  
NOTE: RNAV 1.  
NOTE: DME/DME/IRU or GPS required.  
NOTE: File this procedure when DAL is landing north.  
When DAL is landing south, expect the  
HIBIL RNAV STAR.



## ARRIVAL ROUTE DESCRIPTION

AIRRE TRANSITION (AIRRE.CRIKT1)  
 AXXEE TRANSITION (AXXEE.CRIKT1)  
 CAMAL TRANSITION (CAMAL.CRIKT1)  
 DIRRK TRANSITION (DIRRK.CRIKT1)  
 HITUG TRANSITION (HITUG.CRIKT1)

JETT TRANSITION (JETT.CRIKT1)  
JRHED TRANSITION (JRHED.CRIKT1)  
KLAWW TRANSITION (KLAWW.CRIKT1)  
RRONY TRANSITION (RRONY.CRIKT1)  
RUBBR TRANSITION (RUBBR.CRIKT1)

From FINGR on track 229° to SLANT, then on track 193° to CRIKT, then on track 193°. Expect RADAR vectors to final approach course.

NOTE: Chart not to scale.

## CRIKT ONE ARRIVAL (RNAV)

(FINGR.CRIKT1) 31MAR16

DALLAS, TEXAS

DALLAS LOVE FIELD (DAL)