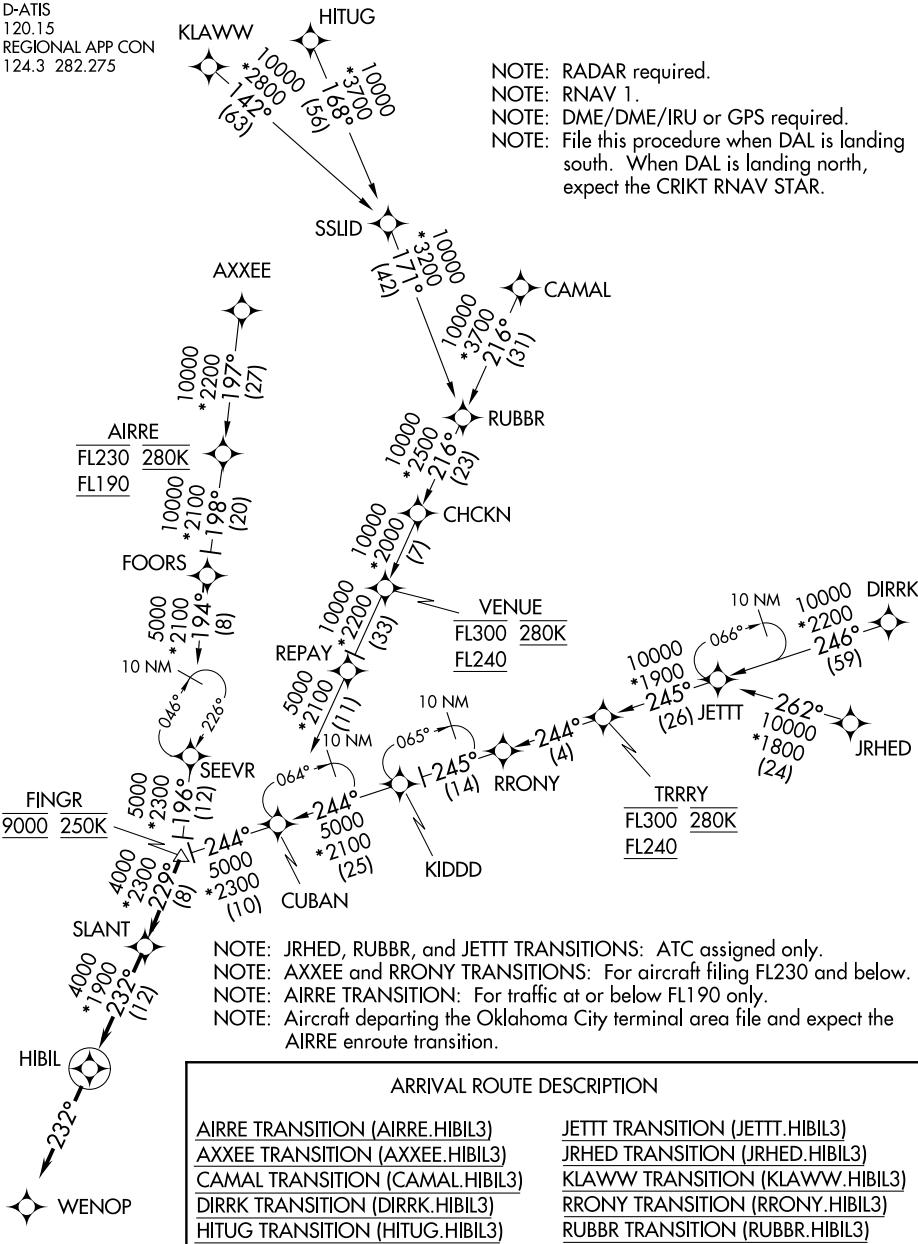


D-ATIS
120.15
REGIONAL APP CON
124.3 282.275

NOTE: RADAR required.
NOTE: RNAV 1.
NOTE: DME/DME/IRU or GPS required.
NOTE: File this procedure when DAL is landing south. When DAL is landing north, expect the CRIKT RNAV STAR.



NOTE: Chart not to scale.

NOTE: JRHED, RUBBR, and JETTT TRANSITIONS: ATC assigned only.
NOTE: AXXEE and RRONY TRANSITIONS: For aircraft filing FL230 and below.
NOTE: AIRRE TRANSITION: For traffic at or below FL190 only.
NOTE: Aircraft departing the Oklahoma City terminal area file and expect the AIRRE enroute transition.

From FINGR on track 229° to SLANT, then on track 232° to HIBIL, then on track 232°. Expect RADAR vectors to final approach course.