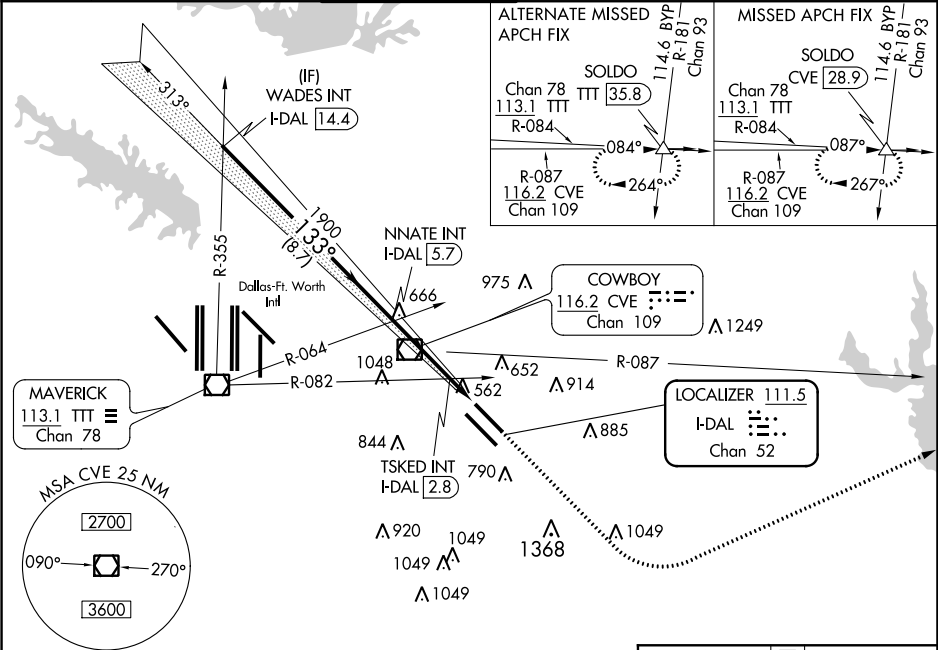


LOC/DME I-DAL	APP CRS	Rwy Idg	7352
111.5	133°	TDZE	485
Chan 52		Apt Elev	487

ILS Y or LOC Y RWY 13L  
DALLAS LOVE FIELD (DAL)

RADAR required for procedure entry.		MALSR	MISSED APPROACH: Climb to 1000 then climbing left turn to 3000 on heading 060° and CVE VOR/DME R-087 to SOLDO INT/CVE 28.9 DME and hold.
<div><div>V</div><div>A</div></div>	Simultaneous approach authorized.		

D-ATIS 120.15	REGIONAL APP CON NORTH 124.3 282.275 SOUTH 125.2 343.65	LOVE TOWER 123.7 239.3	GND CON 121.75 348.6	CLNC DEL 127.9	CPDLC
------------------	---	---------------------------	-------------------------	-------------------	-------



<div><div><div>WADES INT I-DAL 14.4</div><div>2500</div><div>GS 3.00° TCH 55</div></div><div><div>NNATE INT I-DAL 5.7</div><div>1900</div></div><div><div>TSKED INT I-DAL 2.8</div><div>1900</div></div><div><div>I-DAL 2.3</div><div>I-DAL 1.4</div></div><div><div>1000</div><div>3000</div><div>CVE R-087</div><div>SOLDO △</div></div><div><div>133°</div><div>133° 4.3 NM from FAF</div><div>*LOC only.</div></div><div><div>8.7 NM</div><div>2.9 NM</div><div>0.5</div><div>0.9</div></div></div>					<div><div><div>133° 4.3 NM from FAF</div><div>TWR 642</div><div>8800 X 150</div><div>7220 X 30</div><div>31R</div><div>31L</div></div></div>																			
CATEGORY					A					B					C					D				
S-ILS 13L					685/18					200 (200-½)														
S-LOC 13L					920/24					435 (500-½)					920/40					435 (500-¾)				
CIRCLING					1000-1 513 (600-1)					1140-1 653 (700-1)					1220-2 733 (800-2)					1520-3 1033 (1100-3)				
TSKED FIX MINIMUMS (DUAL VOR RECEIVERS OR DME REQUIRED)																								
S-LOC 13L					820/24					335 (400-½)					820/26					335 (400-¾)				
CIRCLING					1000-1 513 (600-1)					1140-1 653 (700-1)					1220-2 733 (800-2)					1520-3 1033 (1100-3)				
TDZ/CL Rwy 13L and 31L HIRL Rwy 13L-31R, and 13R-31L																								
FAF to MAP 4.3 NM																								
Knots					60					90					120					150 180				
Min:Sec					4:18					2:52					2:09					1:43 1:26				