

DALLAS, TEXAS

AL-106 (FAA)

20030

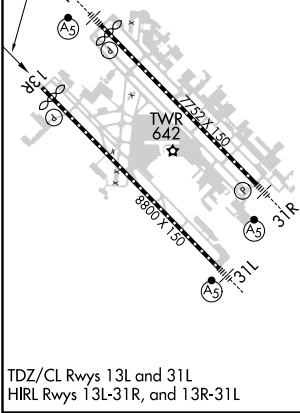
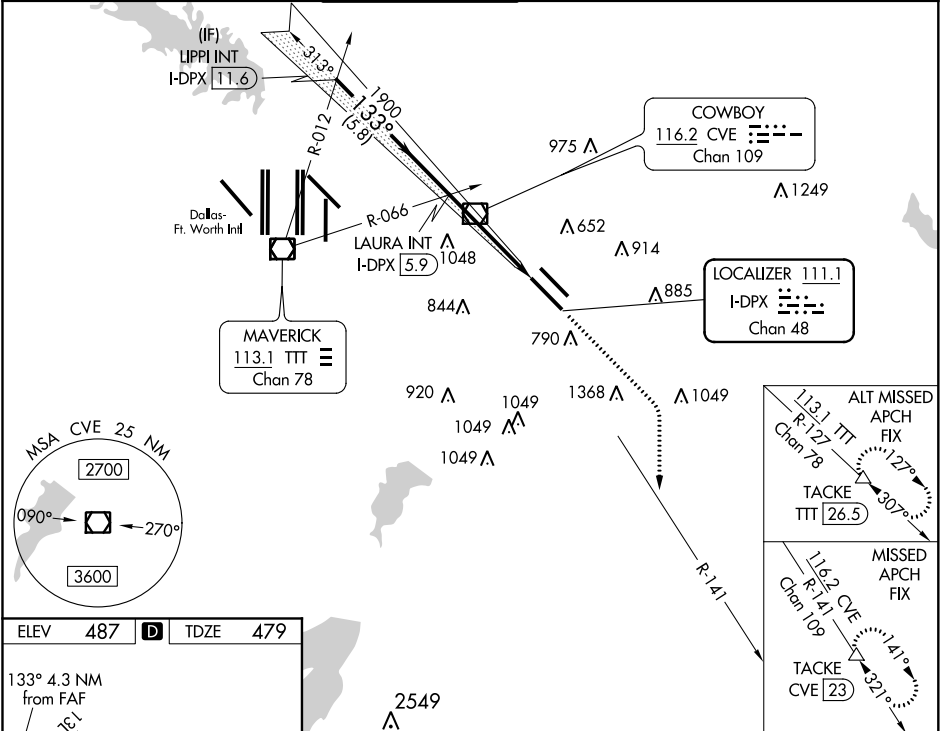
LOC/DME I-DPX <b>111.1</b> Chan <b>48</b>	APP CRS <b>133°</b>	Rwy Idg TDZE Apt Elev <b>8310</b> <b>479</b> <b>487</b>
---	------------------------	--

# ILS Y or LOC Y RWY 13R

DALLAS LOVE FIELD (DAL)

DME required. RADAR required for procedure entry.	MISSED APPROACH: Climb to 1000 then climbing right turn to 3000 on heading 150° and CVE VOR/DME R-141 to TACKE/CVE 23 DME and hold.
Simultaneous approach authorized.	

D-ATIS <b>120.15</b>	REGIONAL APP CON NORTH <b>124.3 282.275</b> SOUTH <b>125.2 343.65</b>	LOVE TOWER <b>123.7 239.3</b>	GND CON <b>121.75 348.6</b>	CLNC DEL <b>127.9</b>	CPDLC
-------------------------	---	----------------------------------	--------------------------------	--------------------------	-------



LIPPI INT I-DPX 11.6		VGSI and ILS glidepath not coincident (VGSI angle 3.00/TCH 52).		1000 ↑		3000 hdg 150°		CVE R-141		TACKE △	
2500		LAURA INT I-DPX 5.9		1900		*I-DPX 2.9		I-DPX 1.6		*LOC only.	
133°		1900		5.8 NM		2.9 NM		1.4 NM			
GS 3.00° TCH 47°											
CATEGORY	A		B		C		D				
S-ILS 13R	679/40 200 (200-¾)										
S-LOC 13R	960/55		481 (500-1)		960-1⅓		481 (500-1⅓)				
CIRCLING	1080-1 593 (600-1)		1140-1 653 (700-1)		1220-2 733 (800-2)		1520-3 1033 (1100-3)				