

D-ATIS  
120.15  
CLNC DEL  
127.9  
CPDLC  
GND CON  
121.75 348.6  
LOVE TOWER  
123.7 239.3  
REGIONAL DEP CON  
118.55 290.35

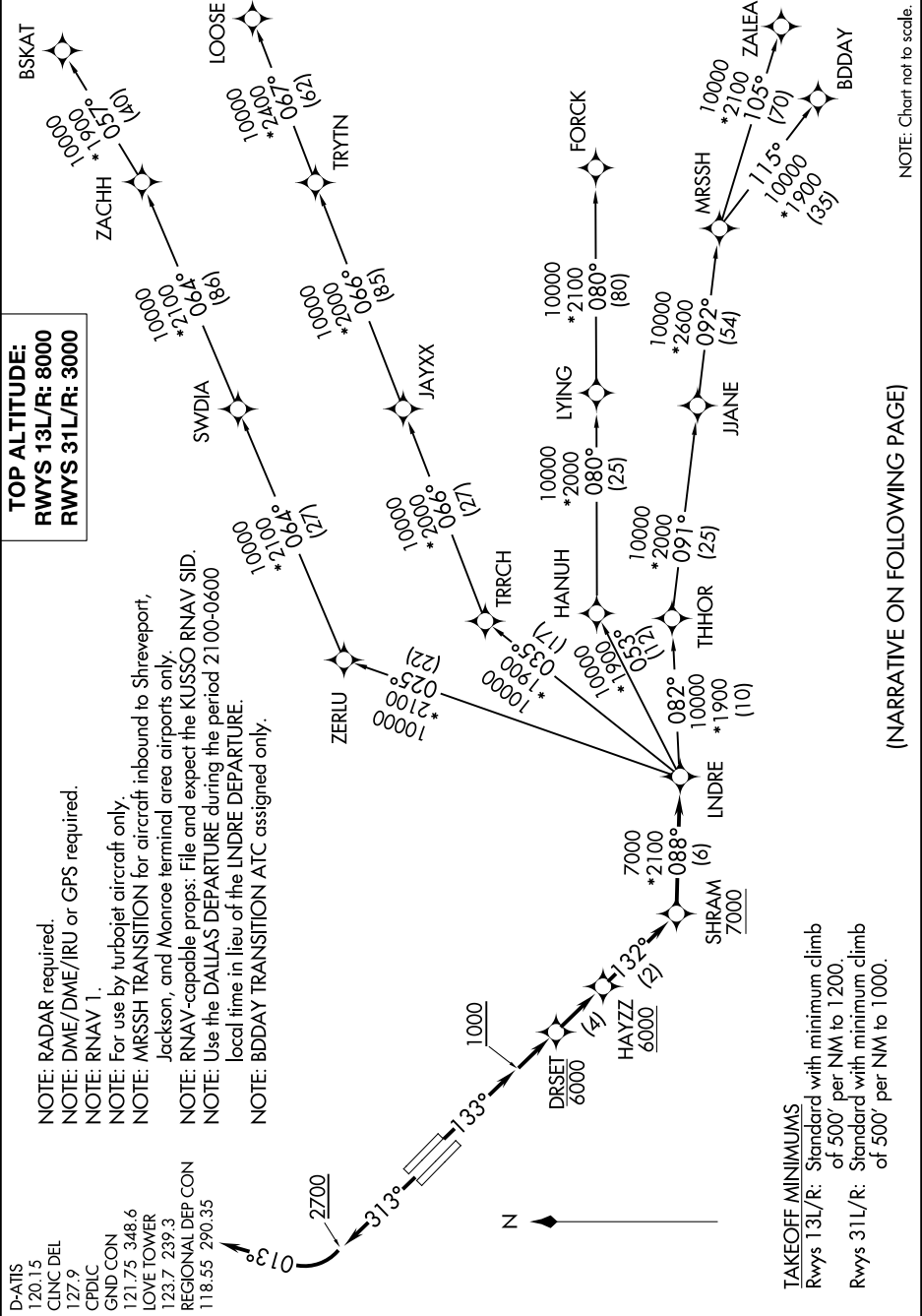
LNDR FIVE DEPARTURE (RNAV)  
(LNDR5.LNDR) 05DEC19

DALLAS, TEXAS

DALLAS LOVE FIELD (DAL)

TOP ALTITUDE:  
RWYS 13L/R: 8000  
RWYS 31L/R: 3000

- NOTE: RADAR required.
- NOTE: DME/DME/IRU or GPS required.
- NOTE: RNAV 1.
- NOTE: For use by turbojet aircraft only.
- NOTE: MRSSH TRANSITION for aircraft inbound to Shreveport, Jackson, and Monroe terminal area airports only.
- NOTE: RNAV-capable props: File and expect the KUSSO RNAV SID.
- NOTE: Use the DALLAS DEPARTURE during the period 2100-0600 local time in lieu of the LNDR DEPARTURE.
- NOTE: BDDAY TRANSITION ATC assigned only.



(NARRATIVE ON FOLLOWING PAGE)

NOTE: Chart not to scale.