

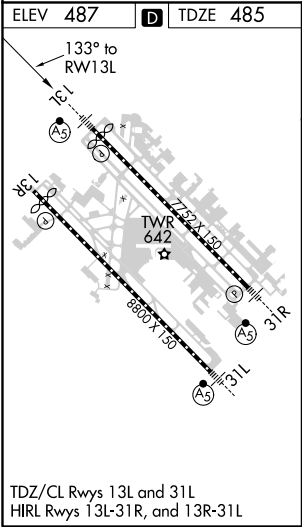
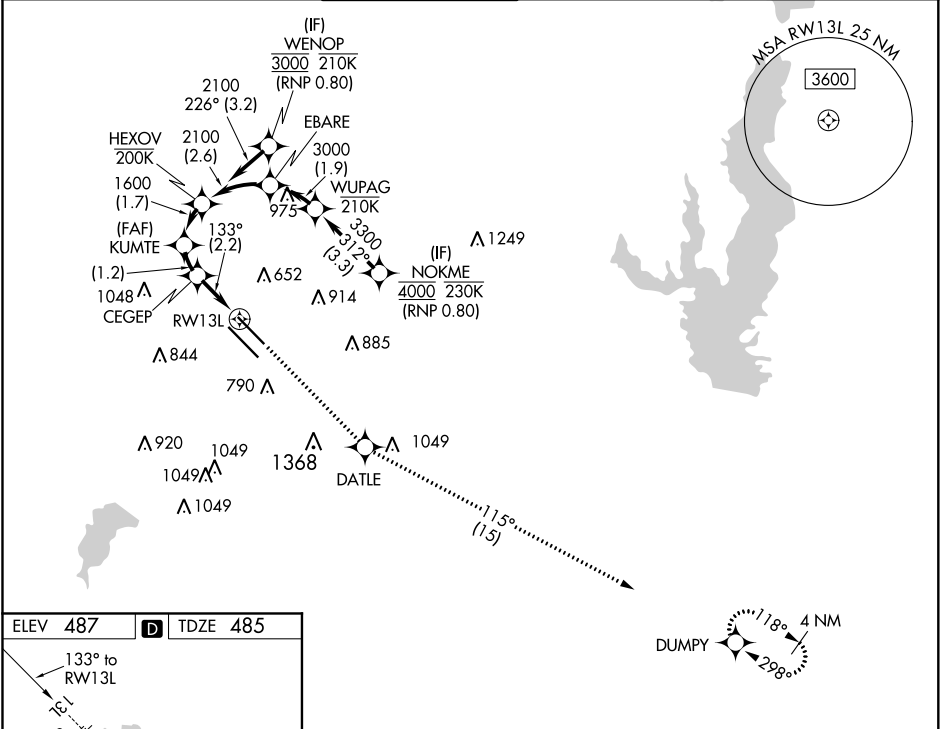
APP CRS	Rwy Idg	7352
133°	TDZE	485
	Apt Elev	487

RNAV (RNP) W RWY 13L

DALLAS LOVE FIELD (DAL)

RNP AR APCH. RF required.	MALSR	MISSED APPROACH: Climb to 3000 direct DATLE and on track 115° to DUMPY and hold.
Simultaneous approach authorized. For uncompensated Baro-VNAV systems, procedure NA below -6°C or above 54°C. For inop ALS, increase RNP 0.11 all Cats visibility to RVR 4500.		

D-ATIS	REGIONAL APP CON	LOVE TOWER	GND CON	CLNC DEL	CPDLC
120.15	NORTH 124.3 282.275 SOUTH 125.2 343.65	123.7 239.3	121.75 348.6	127.9	



See planview for multiple IF locations.				<div>3000 ↑</div>	<div>DATLE ✦</div>	<div>tr 115°</div>	<div>DUMPY ✦</div>
<div><div>HEXOV 2100</div><div>KUMTE 1600</div><div>CESEP 1212</div><div>GP 3.00° TCH 40</div><div>1600</div><div>1.7 NM</div><div>1.2 NM</div><div>2.2 NM</div><div>133°</div><div>RW13L</div></div>							
CATEGORY	A	B	C	D			
RNP 0.11 DA	754/24 269 (300-½)						
RNP 0.30 DA	846/40 361 (400-¾)						
AUTHORIZATION REQUIRED							

SC-2, 31 DEC 2020 to 28 JAN 2021

SC-2, 31 DEC 2020 to 28 JAN 2021