

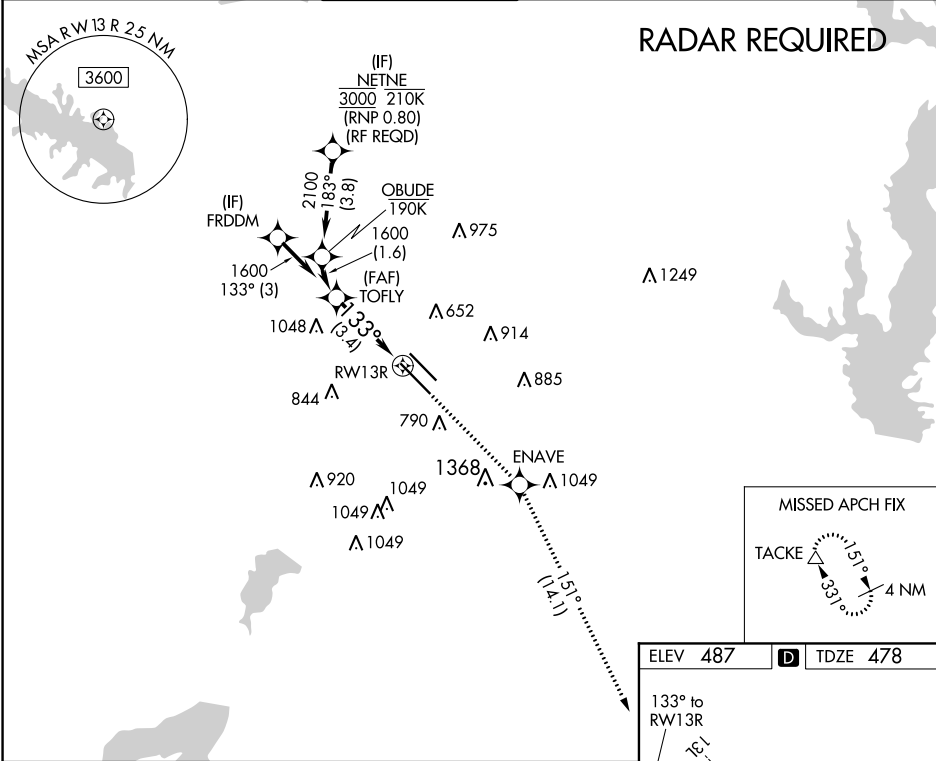
APP CRS	Rwy Idg	8310
133°	TDZE	478
	Apt Elev	487

RNAV (RNP) X RWY 13R  
DALLAS LOVE FIELD (DAL)

▼ For uncompensated Baro-VNAV systems, procedure NA below -5°C (23°F) or above 54°C (130°F). Simultaneous approach authorized. GPS required. Use of FD or AP providing RNAV track guidance required during simultaneous operations.

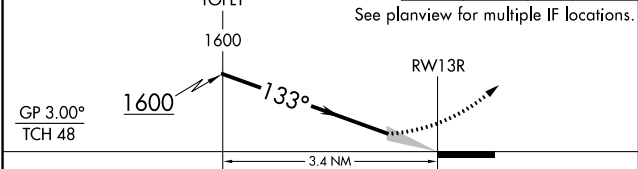
MISSED APPROACH: Climb to 3000 direct ENAVE and on track 151° to TACKE and hold.

D-ATIS 120.15	REGIONAL APP CON NORTH 124.3 282.275 SOUTH 125.2 343.65	LOVE TOWER 123.7 239.3	GND CON 121.75 348.6	CLNC DEL 127.9	CPDLC
------------------	---	---------------------------	-------------------------	-------------------	-------



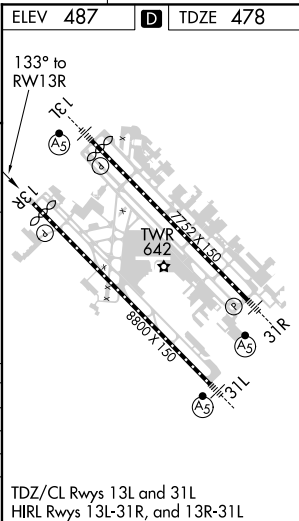
VGSI and RNAV glidepath not coincident (VGSI Angle 3.00/TCH 52).

3000	ENAVE	TACKE
↑	✱	△
	151°	



CATEGORY	A	B	C	D
RNP 0.20 DA		781/50	303 (300-1)	
RNP 0.25 DA		833/60	355 (400-1¼)	
RNP 0.30 DA		929-1½	451 (500-1½)	

AUTHORIZATION REQUIRED



SC-2, 31 DEC 2020 to 28 JAN 2021

SC-2, 31 DEC 2020 to 28 JAN 2021