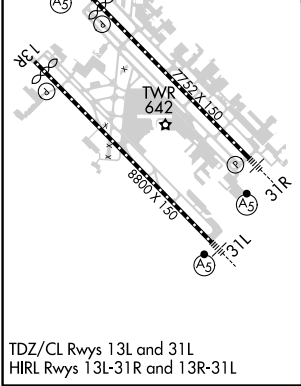
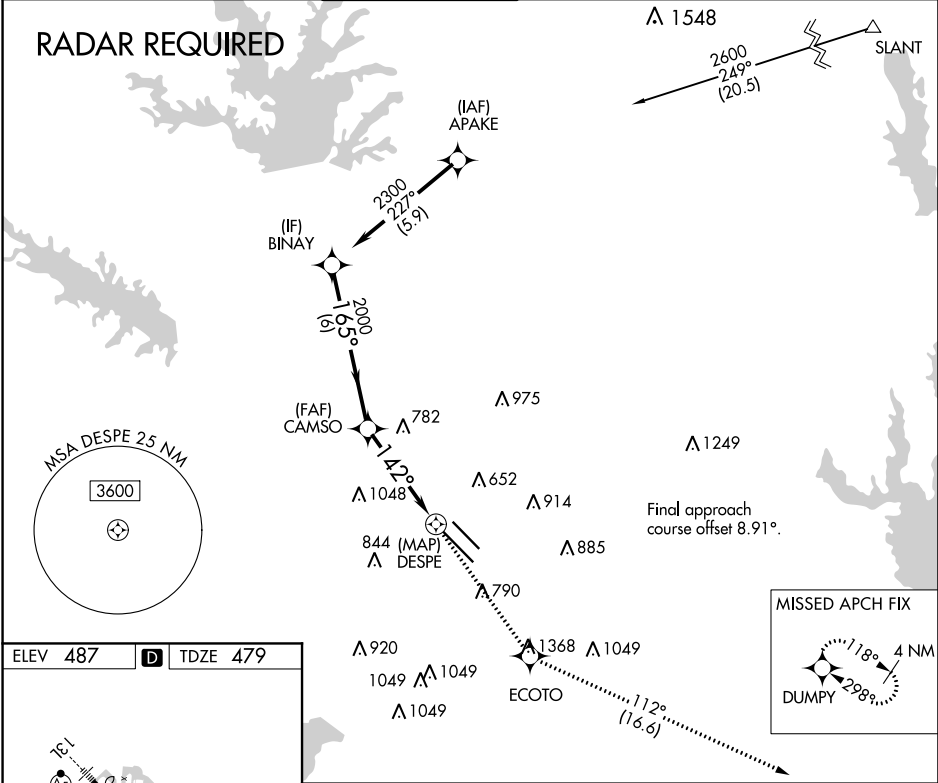


APP CRS	Rwy Idg	8310
142°	TDZE	479
	Apt Elev	487

RNAV (GPS) Y RWY 13R  
DALLAS LOVE FIELD (DAL)

RNP APCH.	MISSED APPROACH: Climb to 5000 direct ECOTO and on track 112° to DUMPY and hold.
-----------	--

D-ATIS 120.15	REGIONAL APP CON NORTH 124.3 282.275 SOUTH 125.2 343.65	LOVE TOWER 123.7 239.3	GND CON 121.75 348.6	CLNC DEL 127.9	CPDLC
------------------	---	---------------------------	-------------------------	-------------------	-------



	5000	ECOTO	tr 112°	DUMPY
	↑	✱	↑	✱
BINAY	2300	CAMSO	2000	DESPE
	165°	2.96° TCH 53	142°	0.7 NM to DESPE
	6 NM	3.5 NM	0.7 NM	
CATEGORY	A	B	C	D
LNNAV MDA	920/55	441 (500-1)	920-1 $\frac{3}{8}$	441 (500-1 $\frac{3}{8}$ )
CIRCLING	1080-1 593 (600-1)	1140-1 653 (700-1)	1220-2 733 (800-2)	1520-3 1033 (1100-3)

SC-2, 31 DEC 2020 to 28 JAN 2021

SC-2, 31 DEC 2020 to 28 JAN 2021