
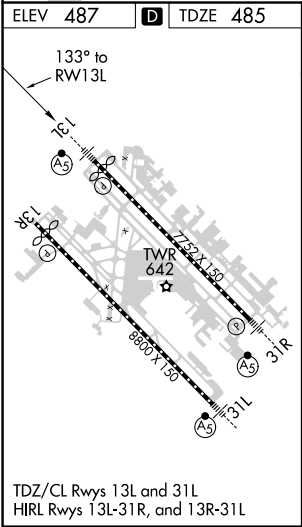
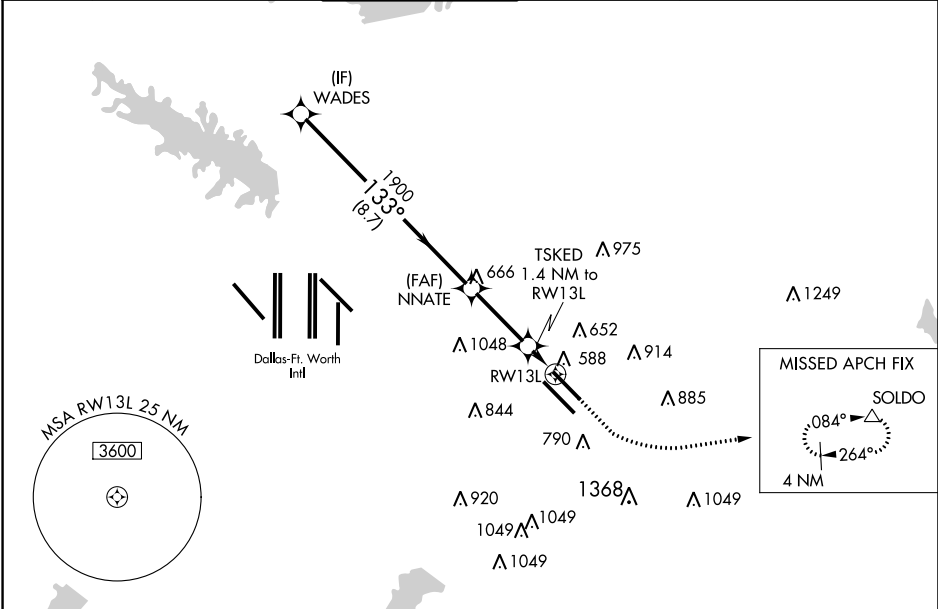


WAAS CH 99723 W13B	APP CRS 133°	Rwy Idg TDZE 485 Apt Elev 487
--	------------------------	---

RNAV (GPS) Z RWY 13L
DALLAS LOVE FIELD (DAL)

RNP APCH.					<div>MALSR</div> <div></div>	MISSED APPROACH: Climb to 1000 then dimbling left turn to 3000 direct SOLDO and hold.
Simultaneous approach authorized. Use of FD or AP required during simultaneous operations. LNAV procedure NA during simultaneous operations. For uncompensated Baro-VNAV systems, procedure NA below -6°C or above 54°C. For inop ALS, increase LNAV/VNAV all Cats visibility to RVR 4500 and LNAV Cats C/D visibility to RVR 5500.						
<div>D-ATIS</div> <div>120.15</div>	<div>REGIONAL APP CON</div> <div>NORTH 124.3 282.275</div> <div>SOUTH 125.2 343.65</div>	<div>LOVE TOWER</div> <div>123.7 239.3</div>	<div>GND CON</div> <div>121.75 348.6</div>	<div>CLNC DEL</div> <div>127.9</div>	<div>CPDLC</div>	



WADES		1000		3000	SOLDO
2500		1900		*980	
GP 3.00°		1900		TSKED 1.4 NM to RWY 13L	
8.7 NM		2.9 NM		1.4 NM	
CATEGORY	A	B	C	D	
LPV DA	685/18		200 (200-½)		
LNAV/VNAV DA	764/24		279 (300-½)		
LNAV MDA	840/24		355 (400-½)		840/30 355 (400-¾)
CIRCLING	1000-1 513 (600-1)	1140-1 653 (700-1)	1220-2 733 (800-2)	1520-3 1033 (1100-3)	

SC-2, 31 DEC 2020 to 28 JAN 2021

SC-2, 31 DEC 2020 to 28 JAN 2021