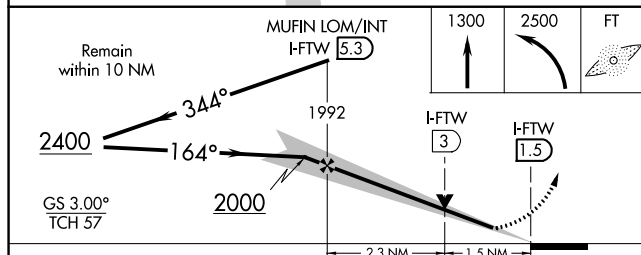
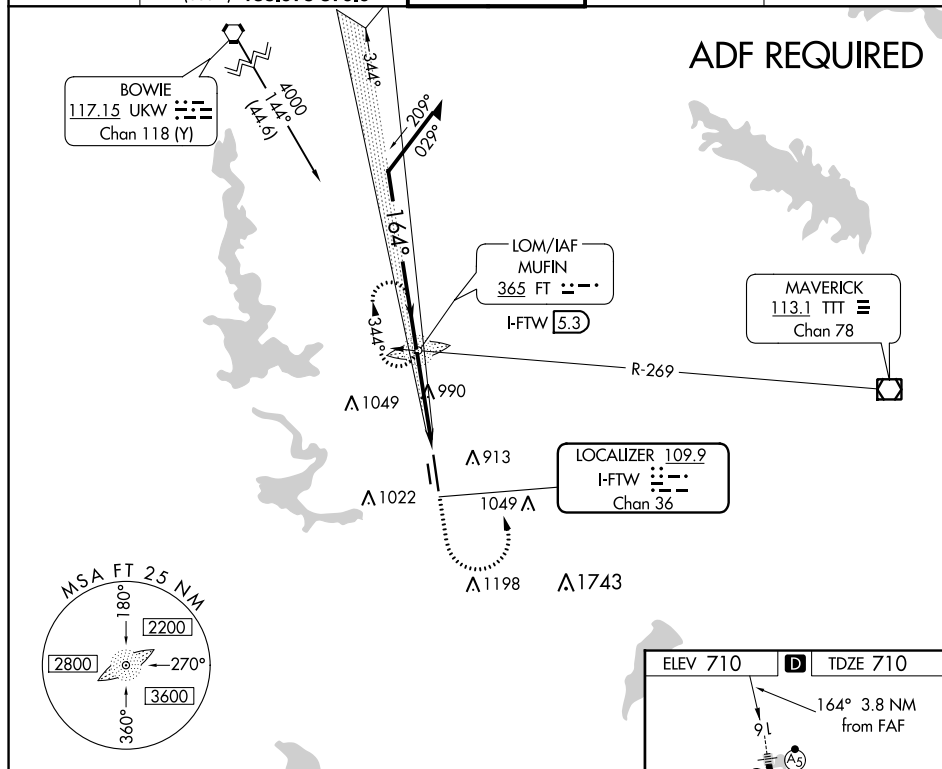


ILS or LOC RWY 16
FORT WORTH MEACHAM INTL (FTW)

MALSR

MISSED APPROACH: Climb to 1300 then climbing left turn to 2500 direct FT LOM and hold, continue climb-in-hold to 2500.

ATIS 120.7	REGIONAL APP CON (North) 118.1 306.95 (South) 135.975 379.9	MEACHAM TOWER 118.3 257.8	GND CON 121.9	CLNC DEL 124.65
---------------	---	------------------------------	------------------	--------------------



CATEGORY	A	B	C	D
S- ILS 16*	910/24		200 (200-½)	
S- LOC 16	1240/24	530 (600-½)	1240/50 530 (600-1)	1240/60 530 (600-1¼)
CIRCLING	1260- 1	550 (600-1)	1280-1½ 570 (600-1½)	1300-2 590 (600-2)

