

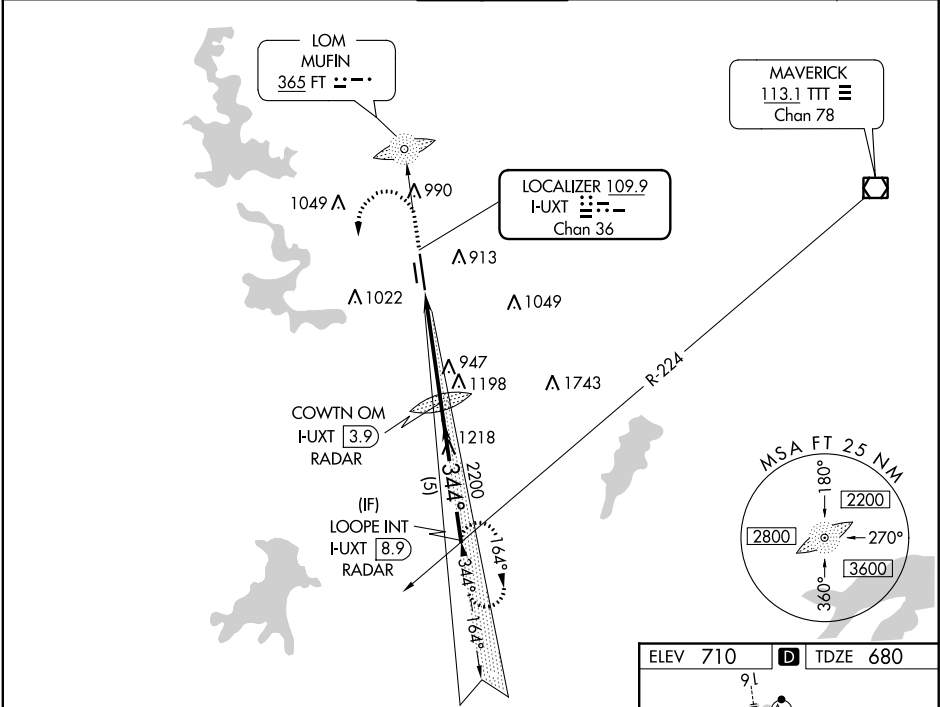
LOC I-UXT 109.9 Chan 36	APP CRS 344°	Rwy Idg 7202 TDZE 680 Apt Elev 710
---	------------------------	---

ILS or LOC RWY 34

FORT WORTH MEACHAM INTL (FTW)

Inoperative table does not apply to S-LOC 34 Cat C.	MALS 	MISSED APPROACH : Climb to 1500, then climbing left turn to 2800 via I-UXT south course to LOOPE Int/ I-UXT 8.9 DME and hold.

ATIS 120.7	REGIONAL APP CON (North) 118.1 306.95 (South) 135.975 379.9	MEACHAM TOWER 118.3 257.8	GND CON 121.9	CLNC DEL 124.65
----------------------	---	-------------------------------------	-------------------------	---------------------------



RADAR REQUIRED

