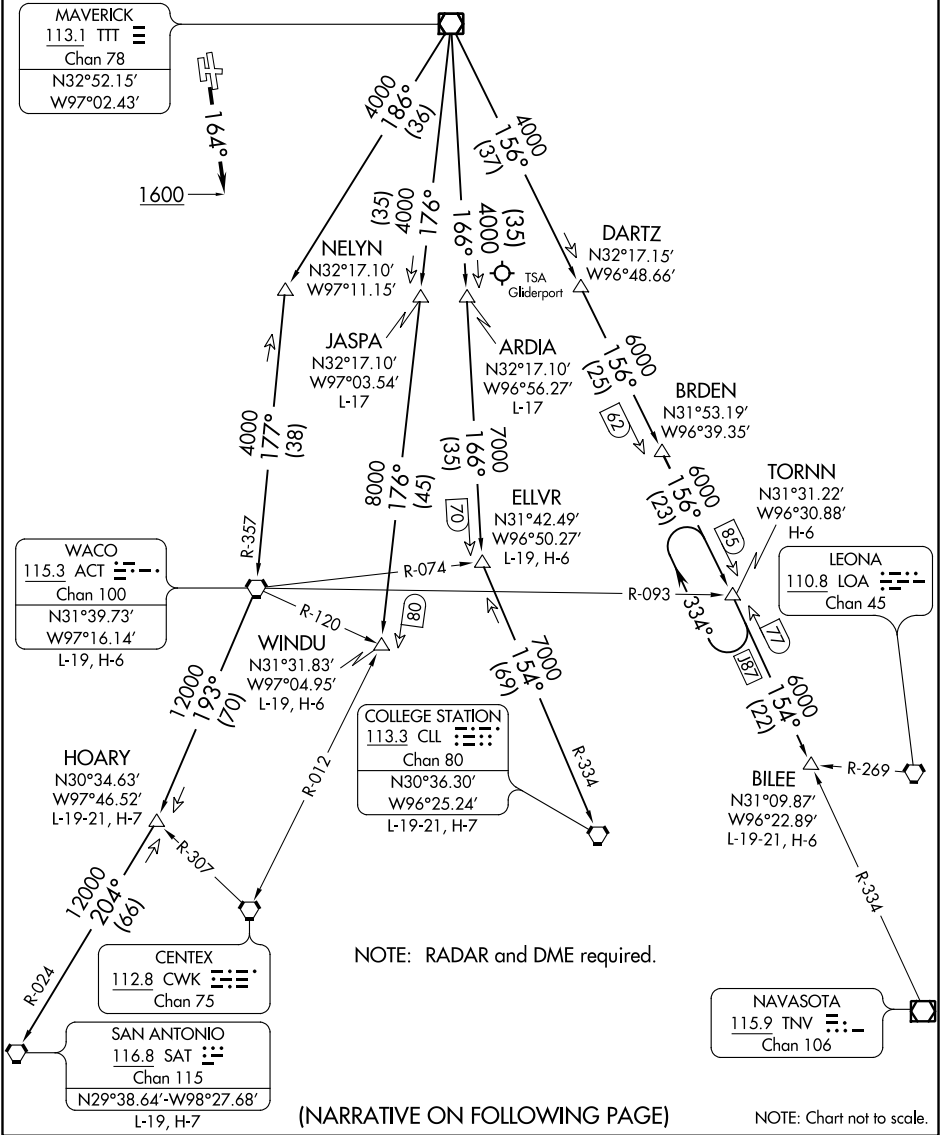


JOE POOL TWO DEPARTURE

ATIS
120.7
CLNC DEL
124.65
GND CON
121.9
MEACHAM TOWER
118.3 257.8
REGIONAL DEP CON
118.1 306.95 (NORTH)
135.975 379.9 (SOUTH)

TAKEOFF MINIMUMS
Rwys 16, 17: Standard.
Rwy 34: 300-2 or standard with minimum climb of 220' per NM to 1100,
or alternatively, with standard takeoff minimums and a normal 200' per NM
climb gradient, takeoff must occur no later than 1800' prior to DER.
Rwy 35: 300-1¼ or standard with minimum climb of 205' per NM to 900,
or alternatively, with standard takeoff minimums and a normal 200' per NM
climb gradient, takeoff must occur no later than 1200' prior to DER.



JOE POOL TWO DEPARTURE

SC-2, 31 DEC 2020 to 28 JAN 2021

SC-2, 31 DEC 2020 to 28 JAN 2021