

HI-ILS or LOC/DME RWY 18

LOC I-NFW 108.7	APCH CRS 177°	Rwy Ldg TDZE Arpt Elev 11,999 636 650	JAL-160 [USN]	FORT WORTH NAS JRB (CARSWELL FLD) (KNFW)
---------------------------	-------------------------	---	---------------	--

*Circling not authorized E of Rwy 18-36.	MISSED APPROACH: Climb to 3000 heading 177° and FUZ VORTAC R-218 to MOLKE and hold.
--	--

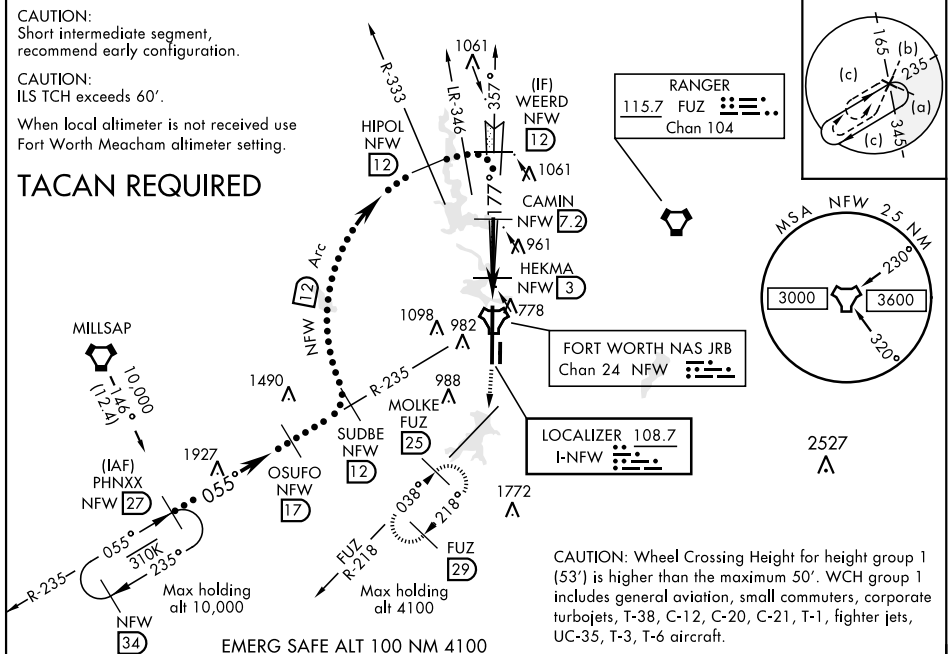
ATIS★ 351.675	REGIONAL APP CON 125.8 257.95	NAVY FORT WORTH TOWER★ 120.950 269.325	GND CON 121.675 279.575	CLNC DEL 126.4 254.325	ASR/ PAR
-------------------------	---	--	-----------------------------------	----------------------------------	-------------

CAUTION:
Short intermediate segment,
recommend early configuration.

CAUTION:
ILS TCH exceeds 60'.

When local altimeter is not received use
Fort Worth Meacham altimeter setting.

TACAN REQUIRED



EMERG SAFE ALT 100 NM 4100

3000 hdg 177°	FUZ R-218	MOLKE FUZ 25	†VDP NA when using FTW altimeter setting	ELEV 650	TDZE 636
TACAN	COGOR NFW 1.4	HEKMA NFW 3	2671	177° 6.4 NM from FAF	81
6 NM	1.6 NM	4.2 NM	1360	793	792
2700	3000	4000	4000	753	759
1320-1 3/4	1320-2	1440-2 3/4	10,000	11,999 x 200	36
670 (700-1 3/4)	670 (700-2)	790 (800-2 3/4)	GS 3.00° TCH 63	357°	ASSAULT STRIP
FORT WORTH MEACHAM ALTIMETER					
S-ILS 18	856-3/4	220 (300-3/4)		REIL Rwy 18	
S-LOC 18	1060-1 1/4	424 (500-1 1/4)		HIRL Rwy 18-36	
FAF to MAP 5.8 NM					
CIRCLING*	1340-2	1340-2 1/4	1460-2 3/4	Knots	120 140 160 180 200
	690 (700-2)	690 (700-2 1/2)	810 (900-2 3/4)	Min:Sec	2:54 2:29 2:10 1:56 1:44

HI-ILS or LOC/DME RWY 18